

Sonata in Sol maggiore per Flauto traverso, Oboe e Basso [S. 243]

J. D. Heinichen (1683-1729)

Basso

[1.] [Affettuoso]

Musical score for the first movement, [1.] [Affettuoso]. The score is written in bass clef with a key signature of one sharp (F#) and a common time signature (C). It consists of four staves of music. The first staff starts with a treble clef and a key signature of one sharp, then changes to a bass clef. The second staff begins at measure 4, the third at measure 7, and the fourth at measure 10. The piece concludes with a fermata on a whole note in the final measure.

[2.] Allegro

Musical score for the second movement, [2.] Allegro. The score is written in bass clef with a key signature of one sharp (F#) and a 2/4 time signature. It consists of eight staves of music. The first staff starts with a treble clef and a key signature of one sharp, then changes to a bass clef. The second staff begins at measure 6, the third at measure 13, the fourth at measure 20, the fifth at measure 27, the sixth at measure 33, the seventh at measure 40, and the eighth at measure 46. The piece concludes with a double bar line and repeat dots.

Basso

53

59

65

71

[3.] Largo

6

12

17

[4.] Allegro

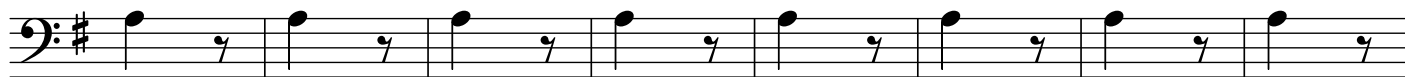
8

15

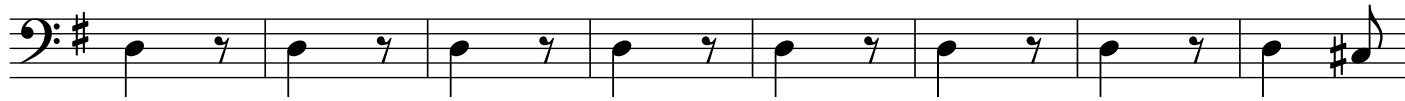
22

Basso

29



37



45



59



67



75



83



91



99



107



116



Sonata in Fa maggiore per Flauto traverso, Violino e Basso [S. 256]

J. D. Heinichen (1683-1729)

Basso

[1.] Affettuoso

5

9

13

[2.] Allegro

5

9

13

17

22

27

31

Basso

35

39

43

46

[3.] Adagio

7 6

11

[4.] Allegro

8

p

14

f

28

36

p *f*

Sonata in Sol maggiore per Flauto traverso / Oboe, Violino e Basso [S. 246]

J. D. Heinichen (1683-1729)

Basso

[1.] [Affettuoso]

10

20

[2.] Allegro ma non troppo

5

9

13

17

21

25

29

32

Basso

36



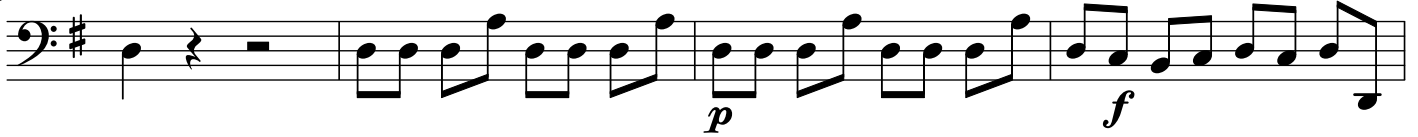
40



44



48



52



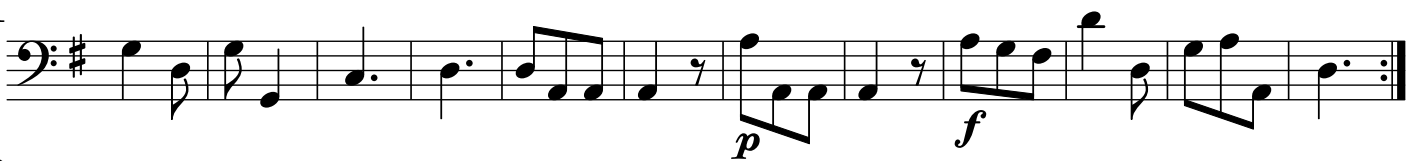
[3.] Menuet



11



21



33



42



51



60

