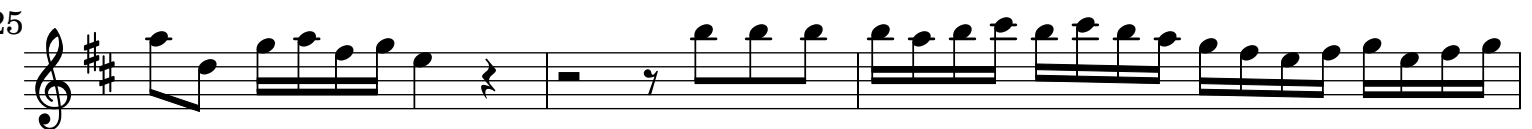
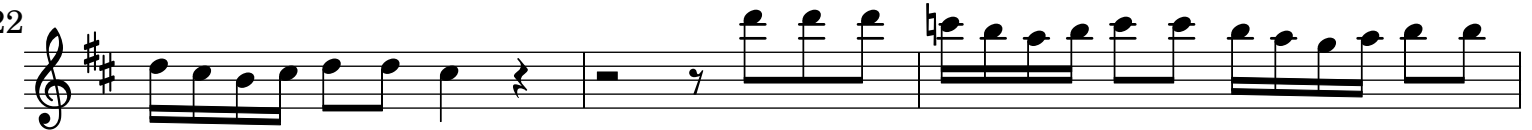
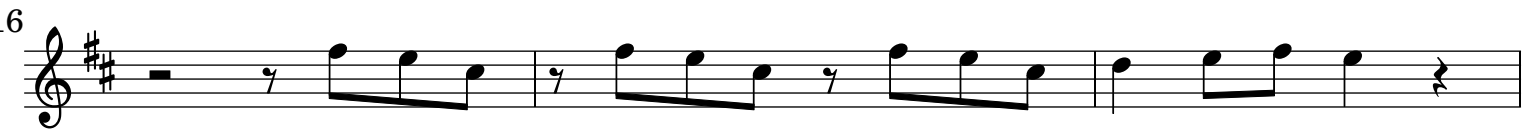
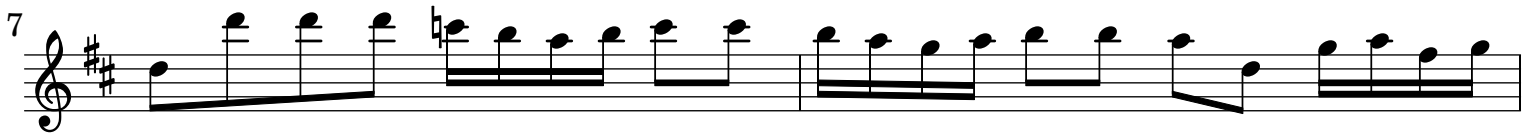


Concerto per Tromba in Re [Gie T9]

Violino Primo

Giuseppe Torelli (1658 - 1709)

[1.] Allegro



Violino Primo score for Tromba Concerto in D major, measures 28-51. The score is written in treble clef with a key signature of two sharps (D major). The music consists of a single melodic line with various rhythmic patterns, including eighth and sixteenth notes, and rests. The piece concludes with a double bar line and a common time signature (C).

Measures 28-31: Continuous eighth-note patterns.

Measures 32-33: Eighth-note patterns with a fermata on the final note of measure 33.

Measures 34-37: Measure 34 has a whole rest, followed by eighth-note patterns in measures 35-37.

Measures 38-40: Eighth-note patterns with a fermata on the final note of measure 40.

Measures 41-43: Eighth-note patterns with a fermata on the final note of measure 43.

Measures 44-45: Eighth-note patterns with a fermata on the final note of measure 45.

Measures 46-48: Eighth-note patterns with a fermata on the final note of measure 48.

Measures 49-50: Eighth-note patterns with a fermata on the final note of measure 50.

Measure 51: Eighth-note patterns with a fermata on the final note of measure 51, followed by a double bar line and a common time signature (C).

[2.] Adagio

[3.] Presto

54

57

59

61

64

[4.] Adagio

[5.] Allegro

6

10

14

18

5

Musical score for Violino Primo, measures 27-74. The score is written in treble clef with a key signature of two sharps (F# and C#). The music consists of ten staves of notation. Measure 27 begins with a quarter rest, followed by a quarter note G4, and then a series of eighth notes. Measures 32-35 show a continuous eighth-note pattern. Measures 36-39 continue with eighth notes, including a quarter rest in measure 38. Measures 40-43 show a steady eighth-note flow. Measures 44-47 continue with eighth notes. Measures 48-52 repeat the pattern from measure 27. Measures 53-56 show eighth notes, with a sharp sign above the final note in measure 56. Measures 61-65 show eighth notes, with a quarter rest in measure 62. Measure 66 features a triplet of eighth notes. Measures 74-77 repeat the pattern from measure 27, ending with a double bar line.