

Sinfonia in Si bemolle maggiore

Violino III

J.-B. Stuck (1680-1755)

[1.] Allegro

4

7 *tr*

11

14 *tr*

18 1. 2.

22

25

28 *tr*

31

34

37

39

41

43

45

48

51

54

57

59

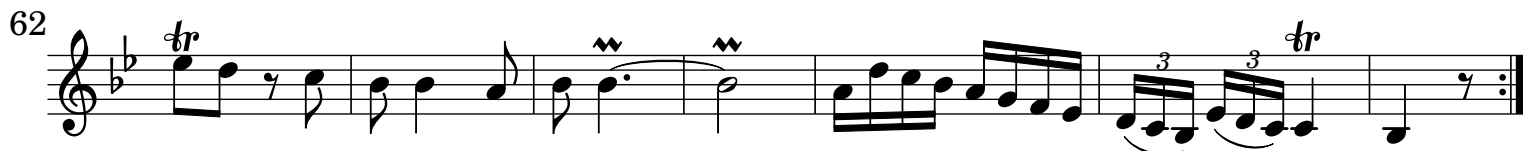
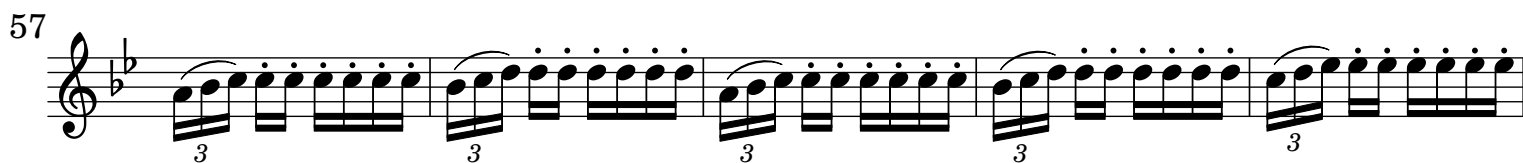
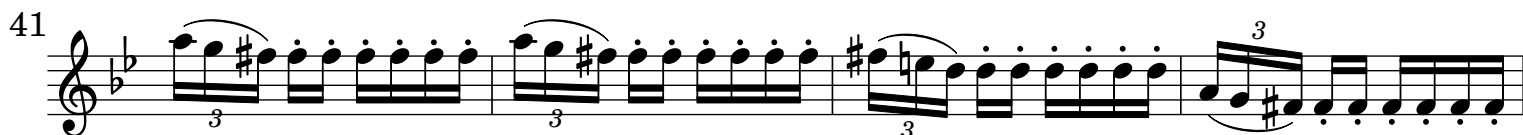
61

64

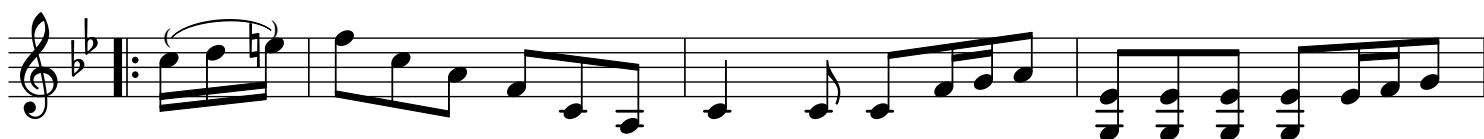
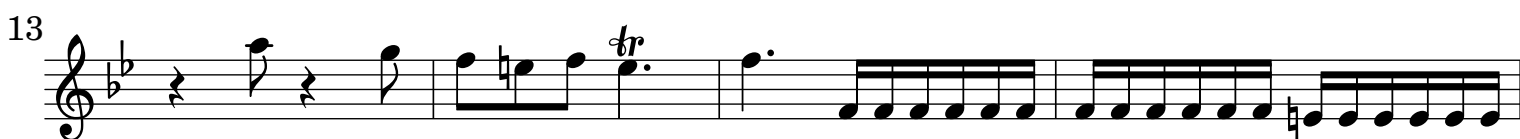
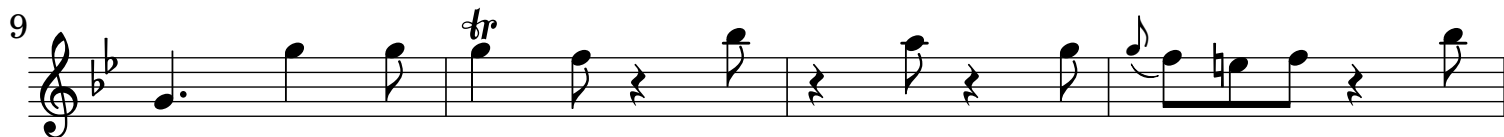
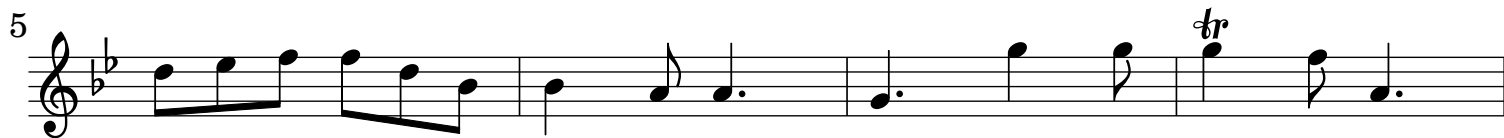
66

The image displays a musical score for Violino III, consisting of ten staves of music. The key signature is B-flat major (two flats). The score begins at measure 39 and ends at measure 66. The notation includes various rhythmic values such as eighth and sixteenth notes, often beamed together. Slurs are used to group notes across measures. Trills are indicated by the 'tr' symbol above notes in measures 54 and 61. The piece concludes with a double bar line and repeat dots at the end of measure 66.

[2.] Andante



[3.] Presto



Musical score for Violino III, measures 43-82. The score is written in treble clef with a key signature of two flats (B-flat and E-flat). The music features a variety of rhythmic patterns, including eighth and sixteenth notes, and rests. Trills (tr) are indicated above several notes. The piece concludes with a double bar line and repeat dots.