

Sinfonia in Si bemolle maggiore

Violino II

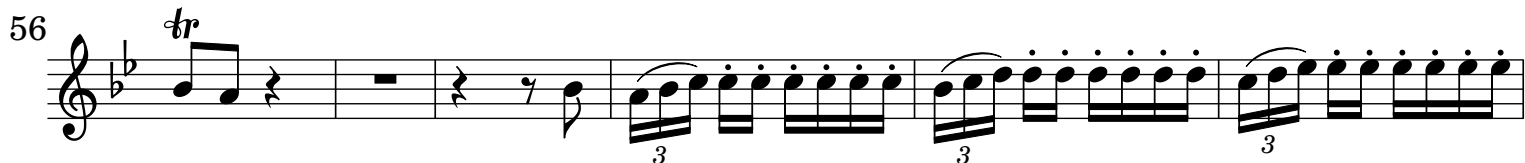
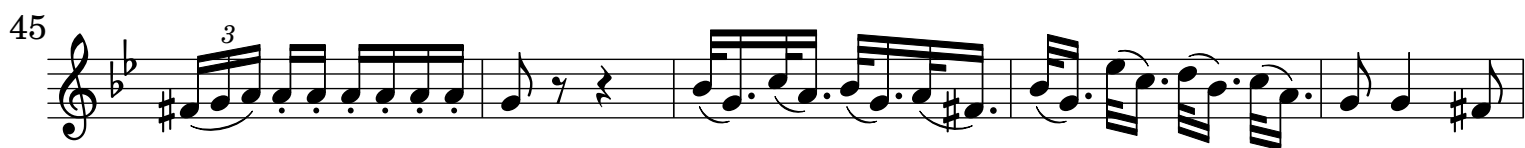
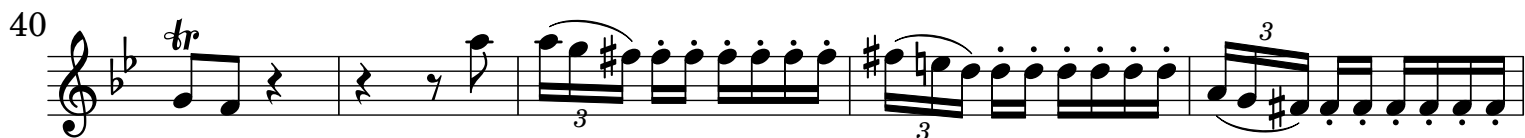
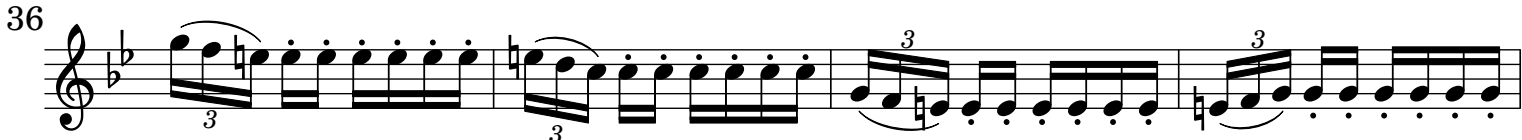
J.-B. Stuck (1680-1755)

[1.] Allegro

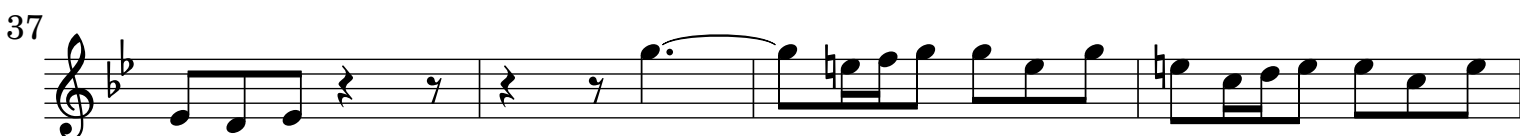
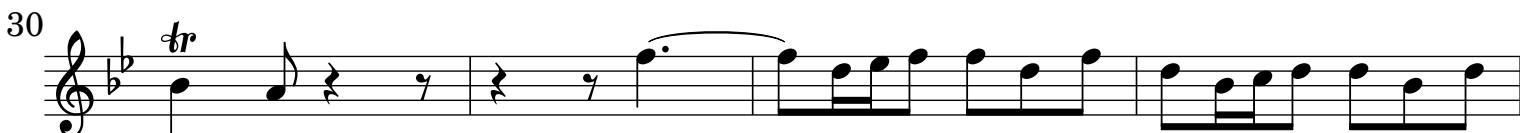
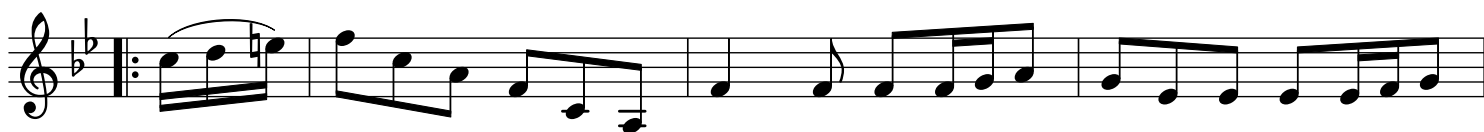
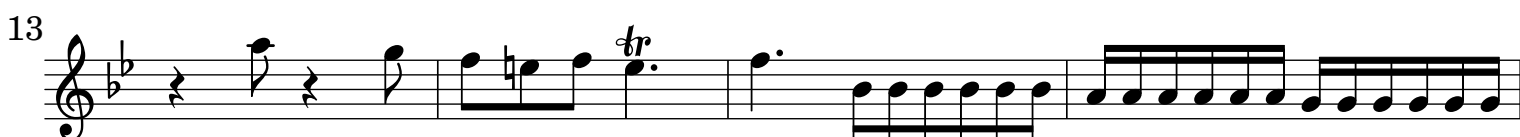
The musical score for Violino II is written in a single system with 33 measures. The key signature is B-flat major (two flats) and the time signature is 3/4. The score begins with a treble clef and a key signature of two flats. The first measure starts with a quarter note G4, followed by eighth notes A4, Bb4, and C5. The piece features a variety of rhythmic patterns, including eighth and sixteenth notes, often grouped with slurs. Trills are indicated with 'tr' above notes in measures 7 and 28. A first and second ending are shown in measures 19-20. The score concludes with a final cadence in measure 33.

Musical score for Violino II, measures 36-66. The score is written in treble clef with a key signature of two flats (B-flat and E-flat). The music consists of ten staves of notation. Measures 36-42 feature a rhythmic pattern of eighth notes with slurs and accents. Measures 43-44 show a change in rhythm with eighth-note runs. Measures 45-47 contain quarter notes with sharp accidentals. Measures 48-50 feature a descending eighth-note line. Measures 51-53 continue with eighth-note patterns. Measures 54-56 include a trill (tr) and a fermata. Measures 57-59 show eighth-note runs. Measures 60-62 continue with eighth-note patterns. Measures 63-65 feature a trill (tr) and eighth-note runs. Measure 66 concludes with a final cadence.

[2.] Andante



[3.] Presto



44

48

51

55

59

62

65

68

71

75

79

82