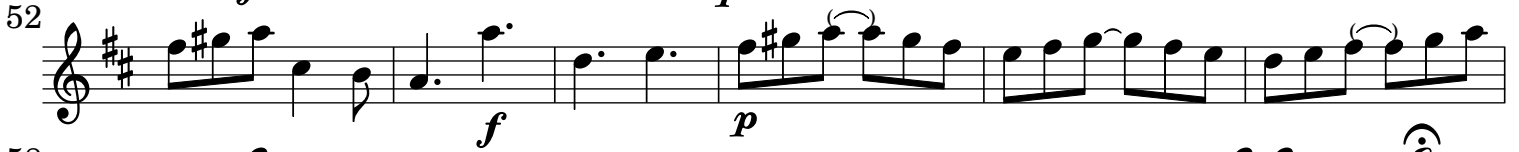
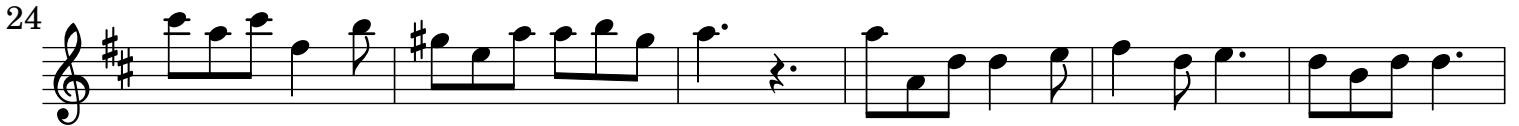


Sinfonia e Arie con strumenti da S. Giovanni Battista

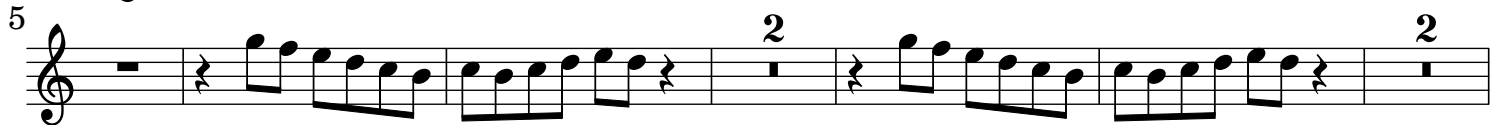
A. Stradella (1643-1682)

Violino di Concerto grosso / Viola soprano

[1.] Sinfonia



[2.] Soffin pur, rabbiosi fremiti



Violino di Concerto grosso / Viola soprano

14

21

26

32

38

44

50

[3.] Sorde Dive - Aria grave

Si sona piano sempre

10

19

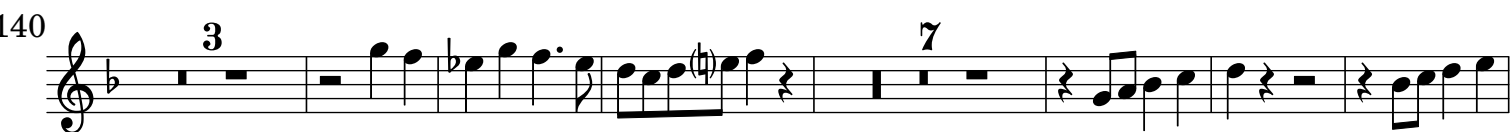
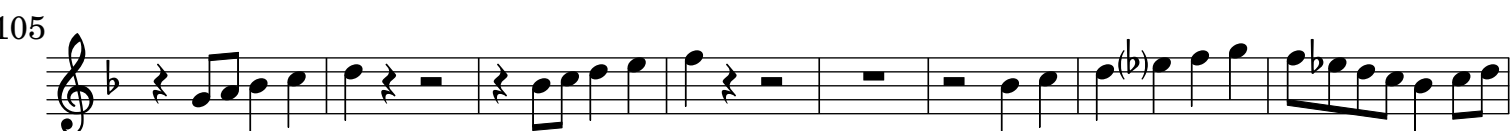
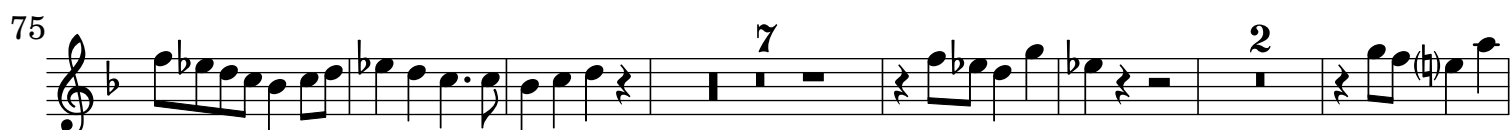
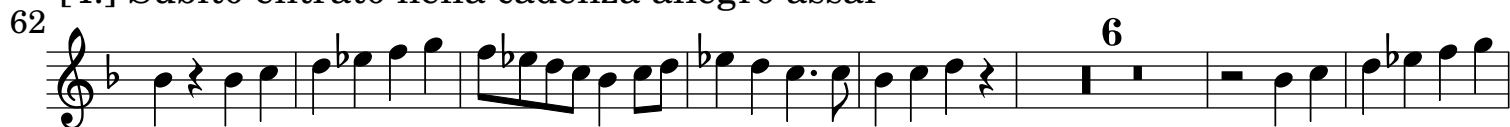
28

36

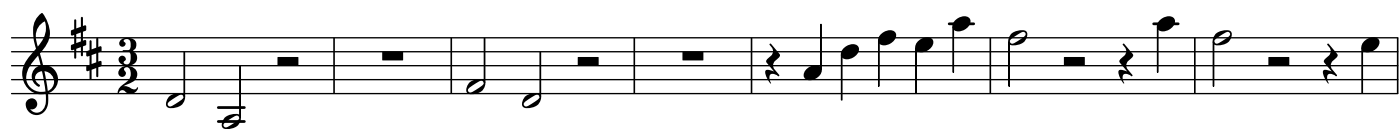
Violino di Concerto grosso / Viola soprano



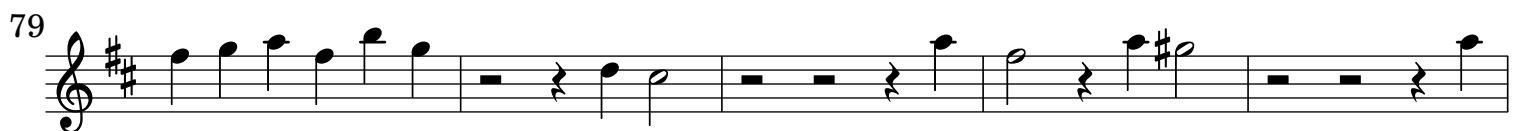
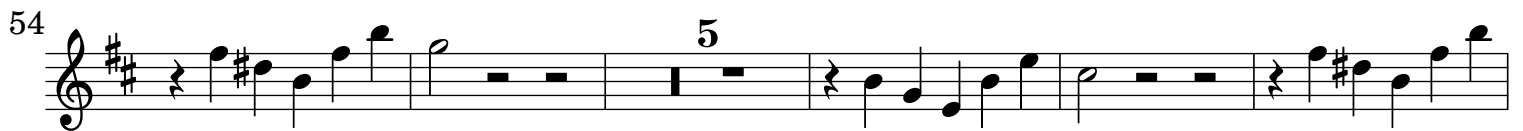
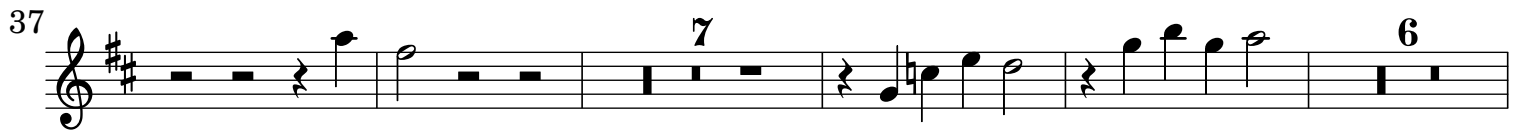
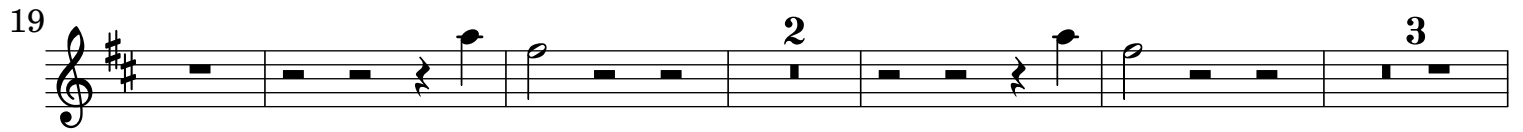
[4.] Subito entrato nella cadenza allegro assai



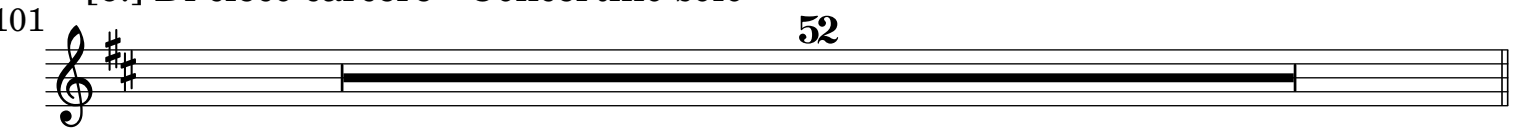
[5.] Tuonerà - Aria Concertata con il Concertino e con il Concerto grosso



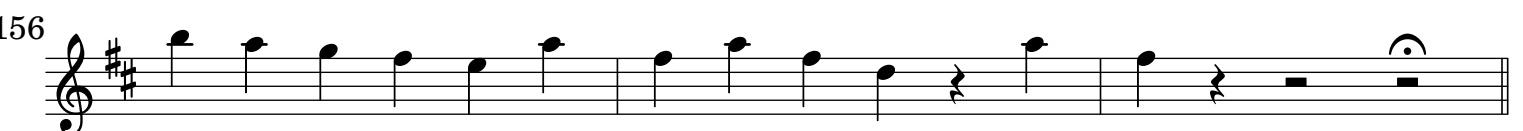
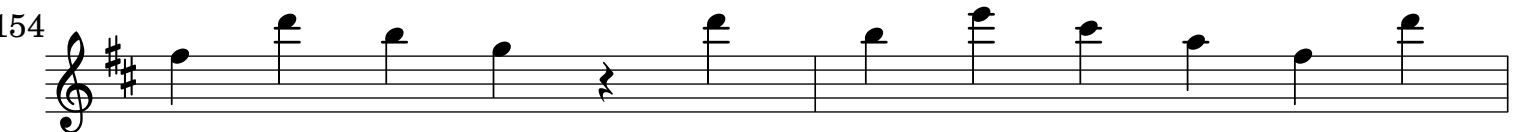
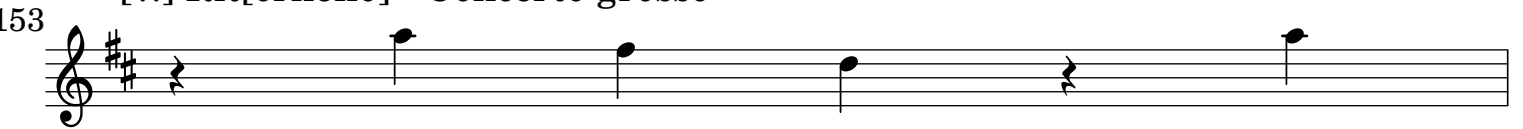
Violino di Concerto grosso / Viola soprano



[6.] Di cieco carcere - Concertino solo



[7.] Rit[ornello] - Concerto grosso



Violino di Concerto grosso / Viola soprano

[8.] Vaghe Ninfe - Aria concertata con il Concerto grosso

Musical score for 'Vaghe Ninfe' in 3/8 time. The score consists of six staves of music. The first staff begins with a treble clef and a 3/8 time signature. The key signature has one sharp (F#). The music features a mix of eighth and sixteenth notes, with some rests. Measure numbers 5, 6, 10, 25, 39, 44, 55, and 65 are indicated at the start of their respective staves. A dynamic marking 'p' (piano) is present at the beginning of the third staff. The score ends with a double bar line and repeat dots.

[9.] Queste lagrime e sospiri

Musical score for 'Queste lagrime e sospiri' in 3/2 time. The score consists of five staves of music. The first staff begins with a treble clef and a 3/2 time signature. The key signature has two flats (Bb and Eb). The music is primarily composed of half and quarter notes, with some rests. Measure numbers 7, 12, 18, and 23 are indicated at the start of their respective staves. The score ends with a double bar line and repeat dots.

28

36

45

50

Detailed description: This block contains the first five staves of a musical score. The key signature is two flats (B-flat and E-flat), and the time signature is common time (C). The first staff (measures 28-35) features a melodic line with a fermata over a dotted half note in measure 35, followed by a double bar line and a '2' above the staff. The second staff (measures 36-44) begins with a '2' above the staff and ends with a double bar line and a '4' above the staff. The third staff (measures 45-49) continues the melodic line. The fourth staff (measures 50-50) concludes with a fermata over a whole note.

[10.] Provi pur le mie vendette

4

8

12

16

20

23

28

Detailed description: This block contains the second section of the musical score, starting with a treble clef and a common time signature. The key signature remains two flats. The first staff (measures 0-3) begins with a rest followed by a melodic line. The second staff (measures 4-7) continues the melody. The third staff (measures 8-11) includes a fermata over a dotted half note in measure 11. The fourth staff (measures 12-15) continues the melodic line. The fifth staff (measures 16-19) includes a fermata over a dotted half note in measure 19. The sixth staff (measures 20-22) continues the melody. The seventh staff (measures 23-27) begins with a '2' above the staff and includes a fermata over a dotted half note in measure 27. The eighth staff (measures 28-28) concludes with a fermata over a whole note.

Violino di Concerto grosso / Viola soprano

31 

36 2. ^a [strofa] 

39 

43 

47 

51 

54 

57 

62 

65 

69 

73 