

Cantata "con duoi Echi" - Arsi già d'una fiamma

Violino I

A. Stradella (1639-1682)

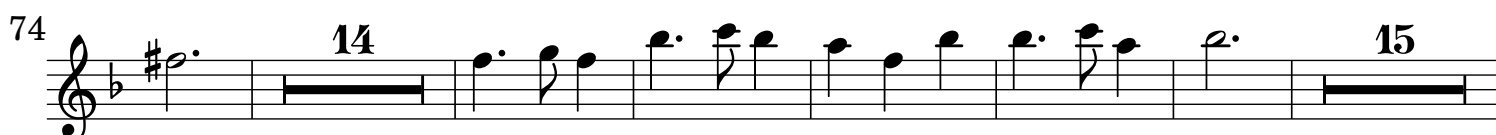
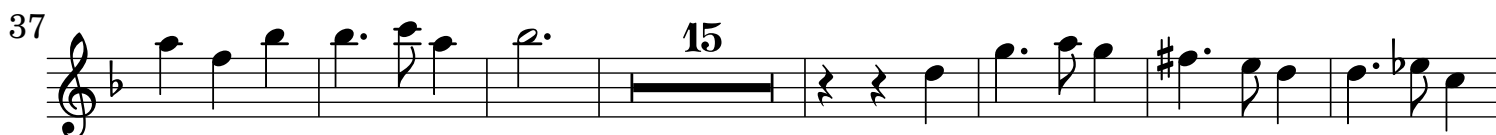
[1.] Arsi già d'una fiamma

Musical notation for the first section, "Arsi già d'una fiamma". It consists of two staves of music in G minor and common time. The first staff begins with a treble clef and a common time signature. The second staff starts at measure 8 and ends at measure 20, with a double bar line and the number 20 written above it.

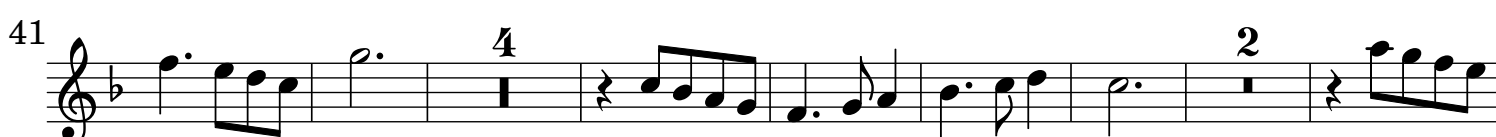
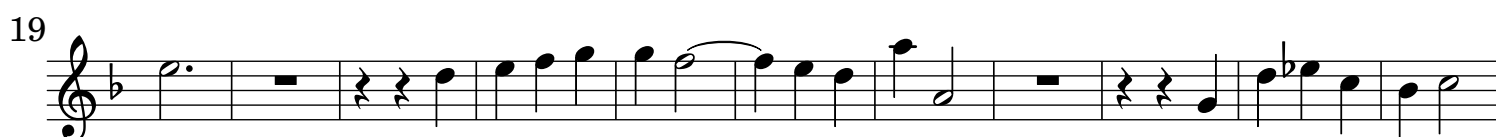
[2.] Io vi adoro o belle rose

Musical notation for the second section, "Io vi adoro o belle rose". It consists of ten staves of music in G minor and common time. The first staff begins with a treble clef and a common time signature. The second staff starts at measure 4. The third staff starts at measure 8 and ends at measure 2, with a double bar line and the number 2 written above it. The fourth staff starts at measure 12. The fifth staff starts at measure 15. The sixth staff starts at measure 18. The seventh staff starts at measure 21. The eighth staff starts at measure 25 and ends with a double bar line and a repeat sign. The ninth staff starts at measure 28 and ends with a double bar line and a repeat sign. The tenth staff starts at measure 39 and ends with a double bar line and a repeat sign.

[3.] Sento voce indistinta tacet [4.] Tra porpore e brine



[5.] Qual dunque fia della mia sorte il fabro tacet [6.] Così va chi segue beltà



[7.] A Tre. Ma questo finale se si vuole si puote cantare a voce sola con VV.
o vero a 3 soprani se piace perché vi sono due echi con gli VV.

Musical score for Violino I, measures 12-69. The score is written in treble clef, 3/4 time, and B-flat major. It consists of four staves of music. Measure numbers 12, 11, 9, 46, 15, and 69 are indicated above the staves. The music features a variety of rhythmic patterns, including eighth and sixteenth notes, and rests.

[8.] A Tre a voce sola con VV.

Musical score for Violino I, measures 10-71. The score is written in treble clef, 3/4 time, and B-flat major. It consists of seven staves of music. Measure numbers 10, 18, 3, 30, 40, 50, 61, and 71 are indicated above the staves. The music features a variety of rhythmic patterns, including eighth and sixteenth notes, and rests.