

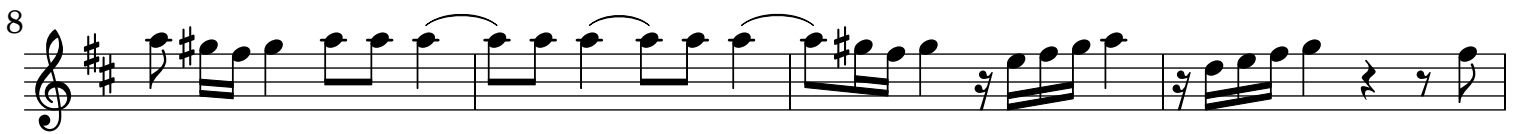
3 Sinfonie da "Il Barcheggio"

Tromba o Cornetto

A. Stradella (1639 - 1682)

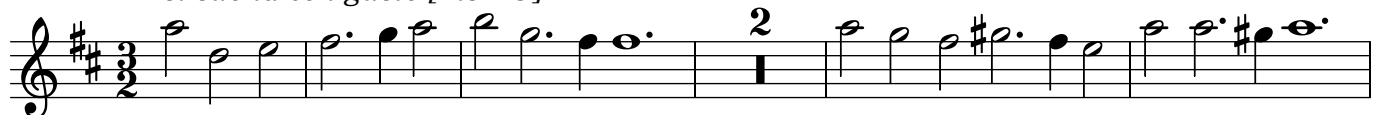
[I] Sinfonia avanti il Barcheggio

[I.1] Spiritosa, e staccata



[I.2 Tripla]

si suona con gusto [ms TO]



Tromba o Cornetto

21

26

31

[I.3 Canzone]

Si suona staccato allegro mà no presto [ms TO]

5

10

16

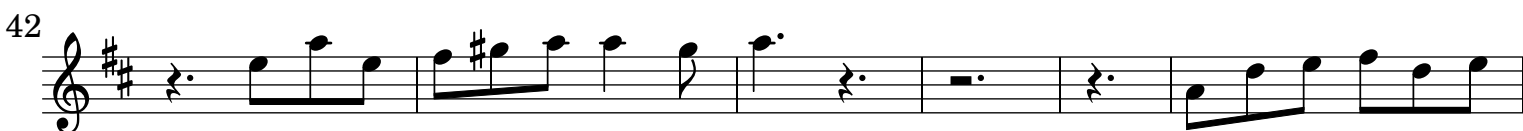
21

25

30

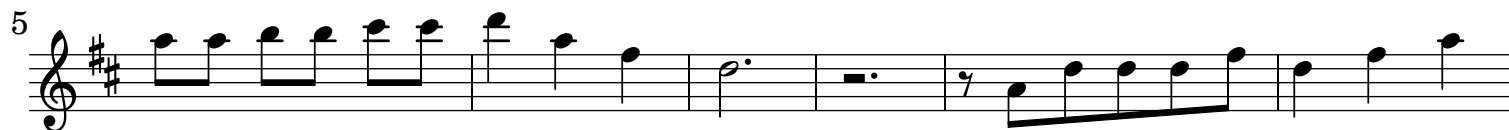
35

[I.4 Allegro]



[II] Seconda parte Sinfonia avanti

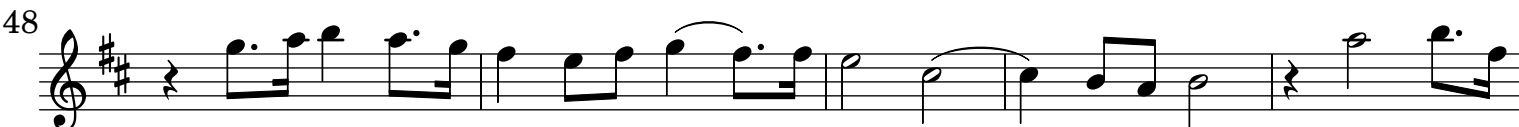
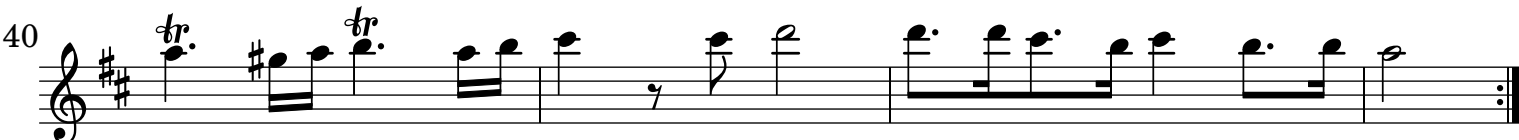
[II.1 Allegro, e staccato]



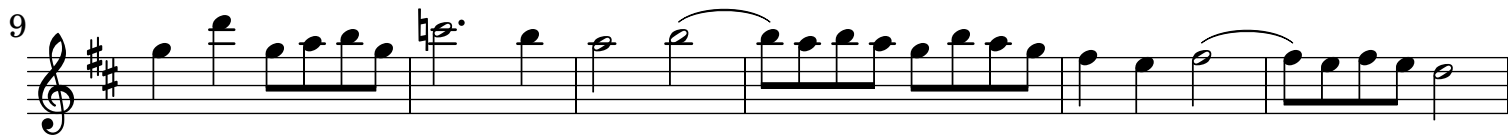
[II.2] Adagio



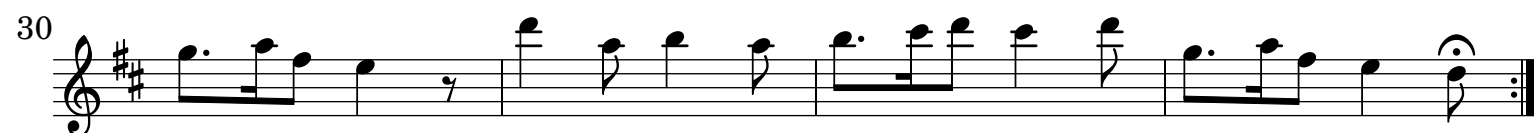
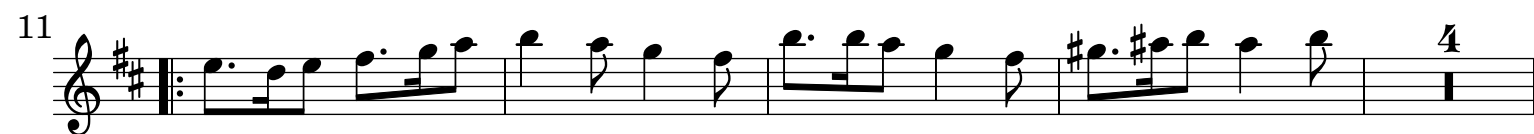
[II.3] Aria Allegro assai staccato



[II.4] Canzone



[II.5 Allegro]



[III] Sinfonia con V.V. all'Unisono, e Cornetto, e Trombone

[III.1] Adagio, forte, e staccato



[III.2] Allegro

