

37

40

42

45

47

50 *Tutti* *tr*

53

56 *tr* *p* *tr* *tr*

59 *f* *tr* *p* *tr*

63 *tr*

66 *Solo* *f*

69

71

73

Detailed description: This is a page of a musical score for the Flauto traversiere (traverse flute) part of a concerto by Carl Philipp Emanuel Bach. The score is written in G major (one sharp) and 3/4 time. It consists of ten staves of music, numbered 37 to 73. The music is characterized by rapid sixteenth-note passages and frequent trills (tr). Performance markings include *Tutti* at measure 50, *f* (forte) at measure 59, *p* (piano) at measure 56, and *Solo* at measure 66. Trills are indicated by the 'tr' symbol above notes. The score ends with a fermata over a whole note at measure 73.

76

78

80

83

85 *Tutti* *tr* *p* *Solo*

88 *f* *tr*

91

93

95

97

100

103

106 *tr* *Tutti* *tr*

110 *tr*

Detailed description: This is a page of a musical score for the Flauto traversiere (traverse flute) part of a concerto. The score consists of 13 staves of music, numbered 76 through 110. The key signature is one sharp (F#), and the time signature is 4/4. The music is written in a single system. The notation includes various rhythmic values, including eighth and sixteenth notes, and rests. There are several trills (tr) and dynamic markings such as *f* (forte), *p* (piano), and *Tutti*. A *Solo* section is indicated between measures 85 and 91. The score ends with a fermata over the final note in measure 110.

114 *tr* *Solo* *tr*

117 *tr* *Tutti* *Solo*

120 *Tutti* *tr*

123 *Solo* *tr* *tr*

126 *tr* *tr* *tr* *tr*

130

133

136

138

141 *tr* *Tutti* *tr* *tr*

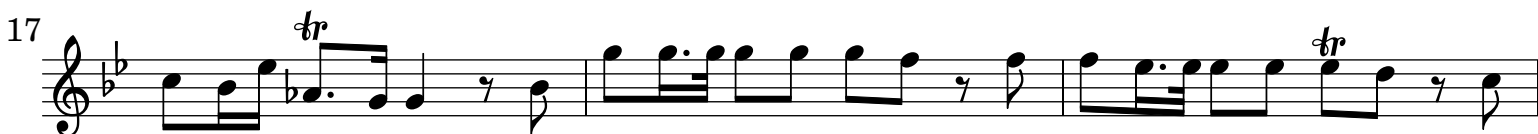
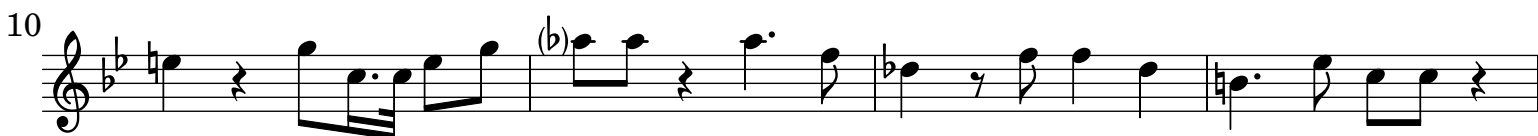
145 *tr* *tr*

149 *p* *f* *p* *tr* *tr*

153 *f*

Detailed description: This page of a musical score for the Flauto traversiere part of a concerto by Carl Philipp Emanuel Bach. It contains 12 staves of music, numbered 114 to 153. The key signature is one sharp (F#). The score includes various musical notations such as trills (tr), dynamics (Solo, Tutti, p, f), and articulation marks. The music features a mix of melodic lines and rhythmic patterns, including sixteenth-note passages and trills.

[2.] Lento



[3.] Vivace



95 *tr* *tr* *tr* *tr* *tr*

103 *tr* *tr* *p*

110 *f* *Solo*

117 *tr* *tr* *tr* *tr*

124

130

137

144

151 *Tutti* *tr.*

158 *Solo*

164 *tr* *tr* *tr* *tr*

171

177 *Tutti* *tr* *tr* *tr* *tr*

185 *tr* *Solo*

192

198

204 *tr* *tr*

211

219 *tr*

229 *tr.*

238 *tr* *Tutti* *tr*

246 *tr* *tr* *tr* *tr*

254 *p* *f* *tr* *tr*

262

Detailed description: This page of a musical score for the Flauto traversiere part of a concerto by Carl Philipp Emanuel Bach. The score is in G major (one sharp) and 3/4 time. It consists of ten staves of music, numbered 177 to 262. The first staff (177) begins with the instruction 'Tutti' and contains four trills. The second staff (185) features a trill followed by a 'Solo' section with a sixteenth-note run. The third staff (192) continues the sixteenth-note run. The fourth staff (198) shows a series of eighth-note chords. The fifth staff (204) includes two trills. The sixth staff (211) consists of eighth-note chords. The seventh staff (219) has a trill. The eighth staff (229) features a trill with a slur. The ninth staff (238) starts with a trill, followed by 'Tutti' and another trill. The tenth staff (246) has four trills. The eleventh staff (254) includes dynamic markings 'p' and 'f' and two trills. The final staff (262) ends with a fermata and a grace note.