

Violino II

68 6

f *p*

79

f *tr*

83

p *f*

87

p *tr* *tr*

92

p

96

p

101

p

107 3

f

114

f *tr* *tr*

119

p

125

p

130

f

Violino II

Musical score for Violino II, measures 134-215. The score is written in treble clef with a key signature of two flats (B-flat and E-flat). The music features various dynamics including *f* (forte) and *p* (piano), and includes performance markings such as *tr* (trills), *8* (octaves), and *3* (triplets). The score is divided into systems with measure numbers 134, 146, 155, 160, 166, 178, 187, 196, 202, 207, 211, and 215. The piece concludes with a fermata over the final note.

Flauto traverso e Violino II

[2.] Affettuoso

Flauto Traverso

Violino Secondo

6 *Lento*

Solo

p

9

f *tr* *fp* *f* *(b)*

13

tr *tr*

17

p *Con sordini*

21

f *p* *f*

Arioso - Con sordini

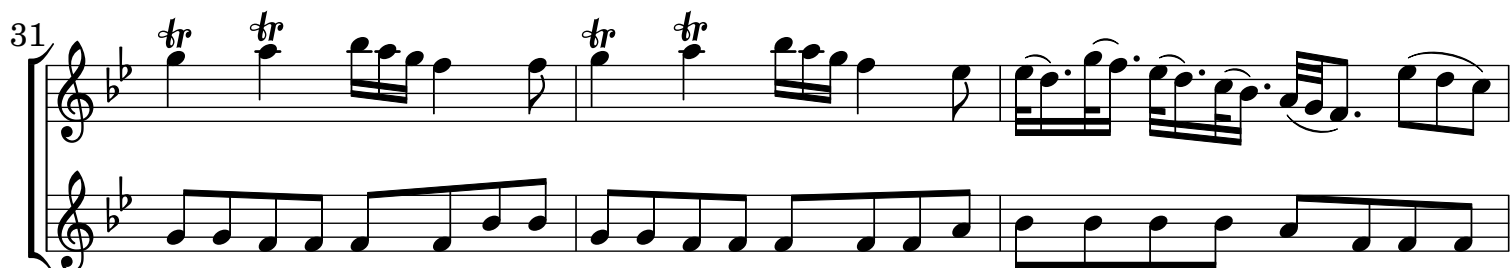
25



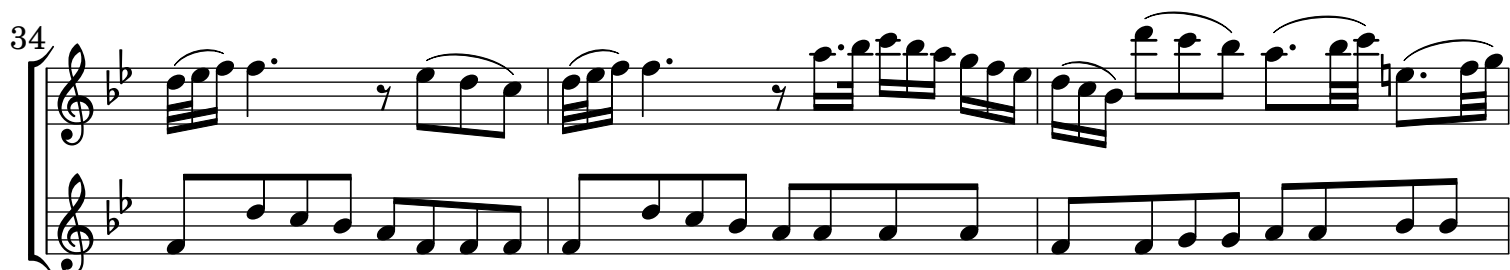
28



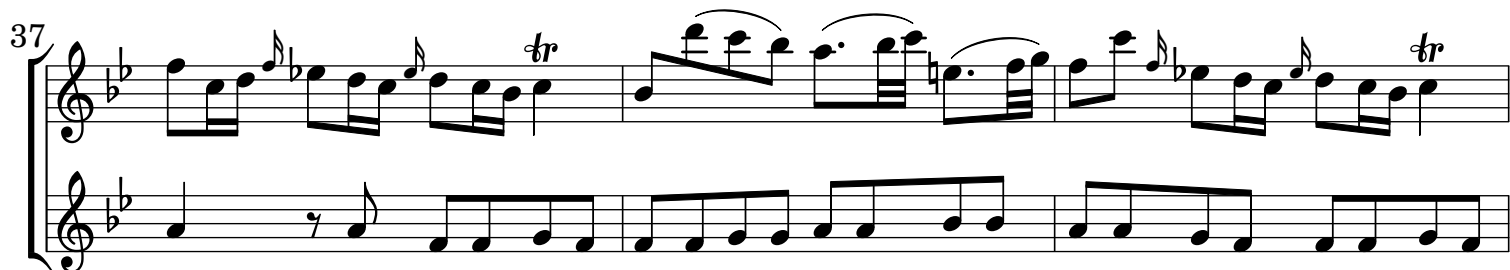
31



34



37

*Lento*

40



Flauto traverso e Violino II

43

Senza sordini *p* *f*

47

p *pp*
Con sordini

52

f

56

Lento

p

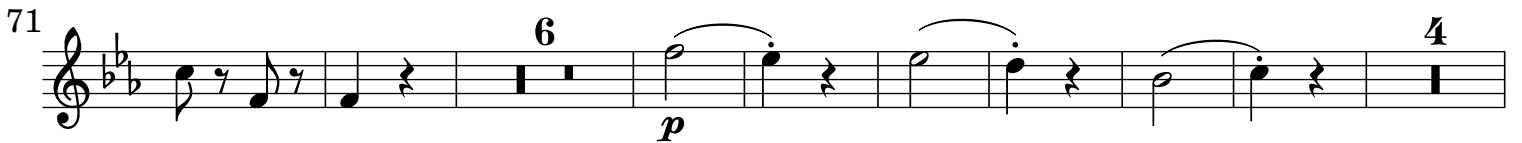
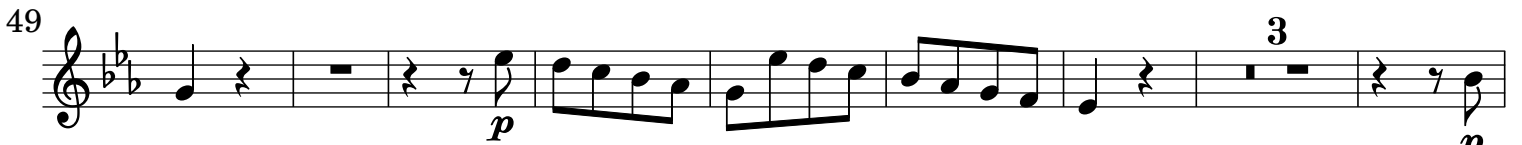
59

62

Senza sordini *pp*

[3.] Vivace

Violino II



Violino II

Musical score for Violino II, measures 113-209. The score is written in treble clef with a key signature of two flats (B-flat and E-flat). The music features various rhythmic patterns, including eighth and sixteenth notes, and rests. Trills (tr) are marked above several notes. Dynamics include piano (p) and forte (f). Fingerings are indicated by numbers 2, 3, and 7. A slur covers a sequence of notes from measure 187 to 194. The score concludes at measure 209.

Violino II

217 *p* *f* 3

228 *tr*

235 *p* *tr*

242

250 *f* *tr* 3

259 *p*

267 *p* 5

279 *f* *tr* *tr* 3

289

297 *tr* *tr* *tr*

304 *tr* *tr*

312 *tr*

Detailed description: This image shows a page of a musical score for Violino II, spanning measures 217 to 312. The music is written in a single staff with a treble clef and a key signature of two flats (B-flat and E-flat). The score includes various musical notations such as rests, eighth and sixteenth notes, triplets, and trills. Dynamic markings include piano (*p*) and forte (*f*). Measure numbers are placed at the beginning of each line. The piece concludes with a double bar line at measure 312.