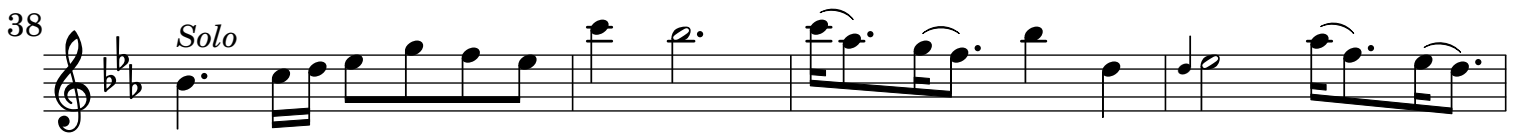


Concerto per Flauto QV 5:89

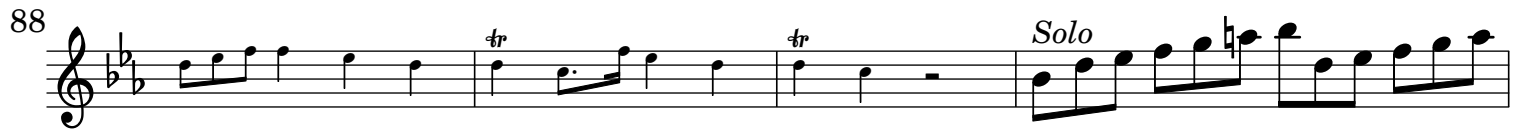
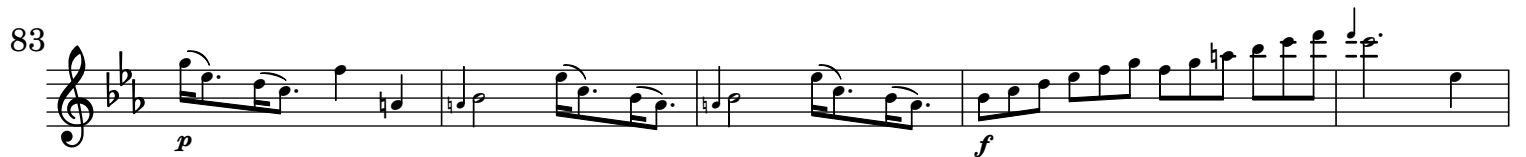
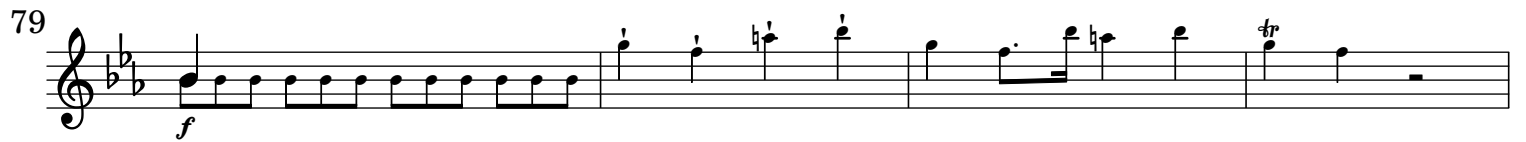
J. J. Quantz (1697-1773)

Flauto traverso

[1.] Allegro Spiritoso



Flauto traverso



Flauto traverso

107

110

113 *f*

117

121

124

128 *f*

132 *Solo*

136

140 *f*

144 *Solo*

148 *f* *Solo*

Flauto traverso

152 *f*

156 *Solo*

160

163

166

169 *f*

173 *f*

177 *Solo*

181

185

188

192 *tr* **24**

Detailed description: This image shows a page of a musical score for the Flauto traverso (traverse flute) part of a concerto. The score is written in treble clef with a key signature of two flats (B-flat and E-flat). The page contains ten staves of music, numbered 152 through 192. The music features various rhythmic patterns, including eighth and sixteenth notes, and rests. Dynamic markings include *f* (forte) and *Solo*. Trills are indicated by the *tr* symbol. The score concludes with a double bar line and the number 24, indicating the end of the section.

Flauto traverso e Violino I

[2.] Affettuoso

Flauto Traverso

Violino Primo

6 *Lento*

Solo

p

9

f *tr* *fp* *f* *(b)* *tr*

13

tr *tr*

17

p

Con sordini

21

f *p* *f*

Arioso - Con sordini

25

28

31

34

37

Lento

40

Flauto traverso e Violino I

43

Senza sordini *p* *f*

47

Con sordini *p* *pp*

52

f

Lento

56

p

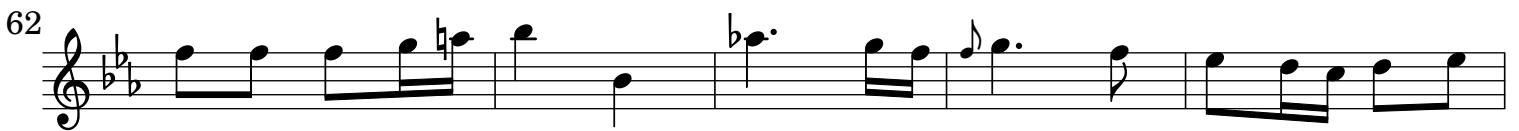
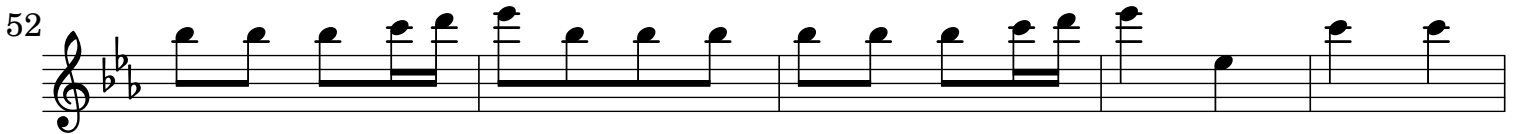
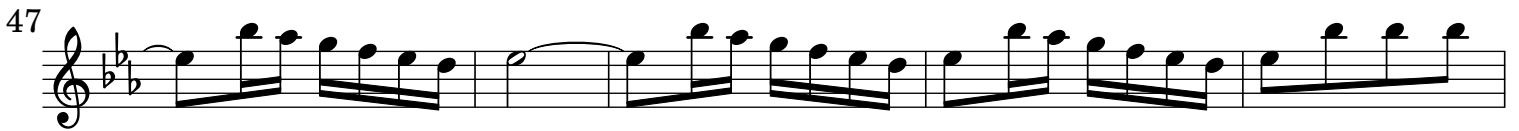
59

62

Senza sordini *pp*

Flauto traverso

[3.] Vivace



Flauto traverso

83

88

115

120

125

129

134

139

144

149

153

158

Flauto traverso

Musical score for Flauto traverso, measures 162-223. The score is written in treble clef with a key signature of two flats (B-flat and E-flat). The music features various rhythmic patterns, including eighth and sixteenth notes, and rests. Trills (tr) are indicated above several notes. A fermata is present over a measure at measure 178, with the number 12 written above it. A solo section begins at measure 200, marked with *Solo* and *f* (forte). The score concludes with a trill (tr) above a note at measure 223.

Flauto traverso

227

232

237

243

248

252

258

263

267

271

276

280