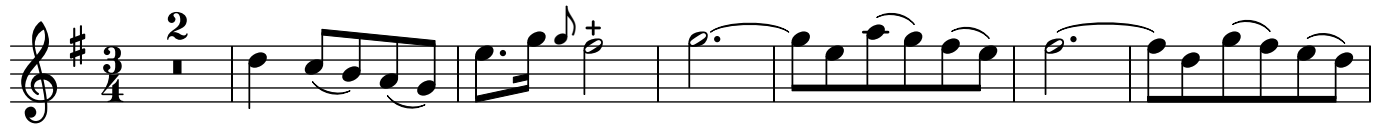


Concerto I Opera 2

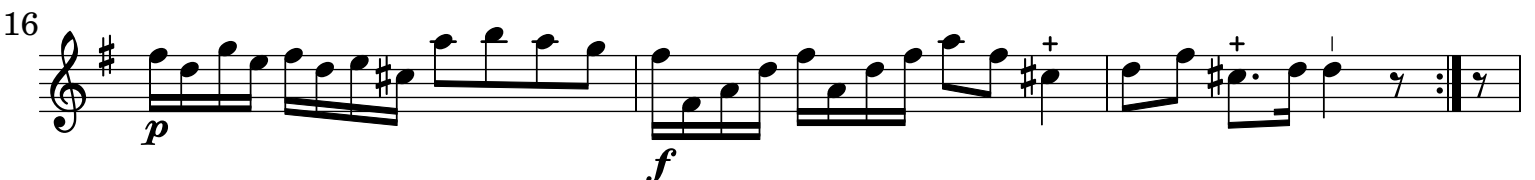
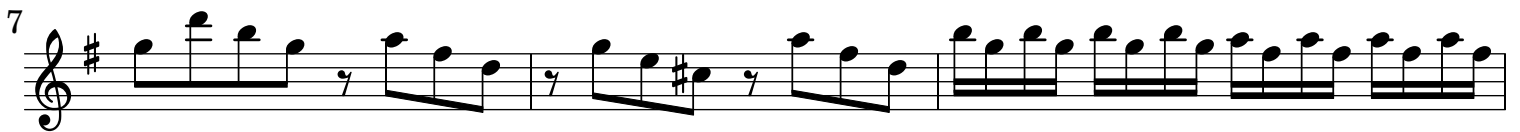
Violino / Flauto / Oboe II

N. Porpora (1686-1768)

[1.] Adagio



[2.] Allegro



19

22

25

28

31

34

37

40

43

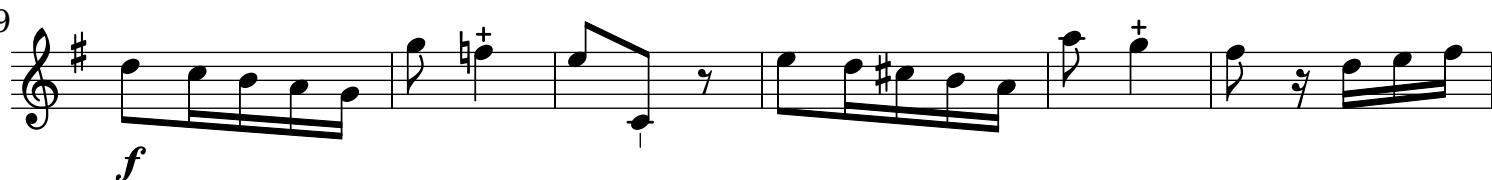
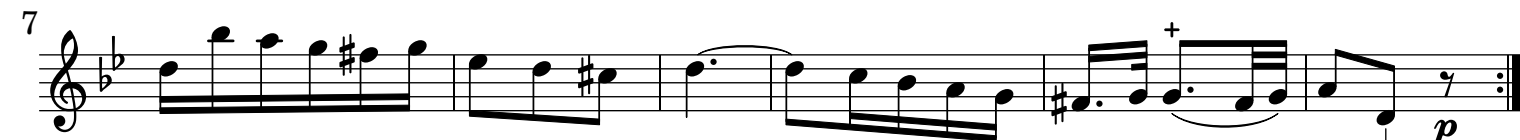
46

49

p

f

The image shows a musical score for Violino / Flauto / Oboe II, measures 19 to 50. The score is written in treble clef with a key signature of one sharp (F#). The music consists of ten staves of notation. Measures 19-21 feature a melodic line with eighth and sixteenth notes. Measures 22-27 show a series of chords, many with a '+' sign above them, indicating a specific performance technique. Measures 28-30 continue with melodic lines and chords. Measures 31-33 feature a melodic line with a dynamic marking of *p* (piano) at the end. Measures 34-36 show a melodic line with a dynamic marking of *f* (forte) at the beginning. Measures 37-39 consist of a series of chords. Measures 40-42 feature a melodic line with eighth notes. Measures 43-45 show a series of chords. Measures 46-48 continue with melodic lines and chords. Measure 49 concludes with a melodic line and a final chord. The score is marked with various dynamics and performance instructions.

[3.] Aria I. ^a[4.] Aria II. ^a

13 *f*

19

23

27

31

36

41

45

49

54 *al Prima*