

Sonata per Cembalo e Flauto traverso

Flauto traverso

C. Nichelmann (1717-1762)

[1.] Moderato

The image displays a musical score for the Flute part of a Sonata for Cembalo and Flute by C. Nichelmann. The score is written in a single system with 11 staves, numbered 1 through 20. The first staff (measure 1) begins with a treble clef, a common time signature (C), and a fermata over a whole note with the number '5' above it. The music consists of eighth and sixteenth notes, with some measures containing triplets. A trill (tr) is indicated above a note in measure 18. The score concludes with a fermata in measure 20. The key signature has one sharp (F#).

Flauto traverso

22

24

26

28

29

31

34

36

38

40

41

42

43

The image displays a musical score for a flute part, labeled 'Flauto traverso'. It consists of 12 staves of music, numbered 22 through 43. The notation is in treble clef and includes various rhythmic values, accidentals (sharps), and dynamic markings (such as 'p' for piano). The music features a mix of eighth and sixteenth notes, often beamed together, and includes some rests and slurs. The key signature appears to have one sharp (F#).

Musical score for Flauto traverso, measures 44 to 65. The score is written in treble clef and includes various musical notations such as notes, rests, trills (tr), and slurs. The key signature is one flat (B-flat).

Measures 44-45: Introduction with eighth notes and a quarter rest.

Measures 46-47: Continuation of the eighth-note pattern with a quarter rest.

Measures 48-49: Rapid sixteenth-note passages, including a sharp sign (#).

Measures 50-51: Further sixteenth-note runs.

Measures 52-53: Sixteenth-note passages with a trill (tr) over a dotted quarter note.

Measures 54-55: Sixteenth-note passages with a trill (tr) over a dotted quarter note.

Measures 56-57: Sixteenth-note passages with a flat sign (b) and a quarter rest.

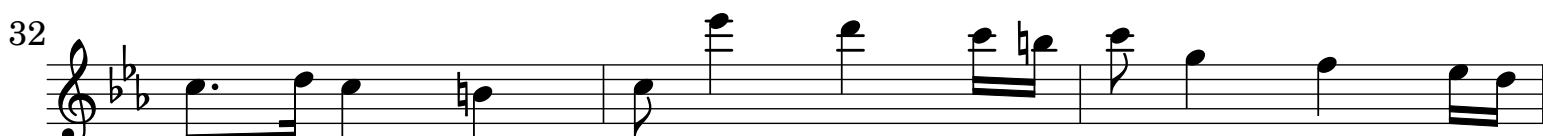
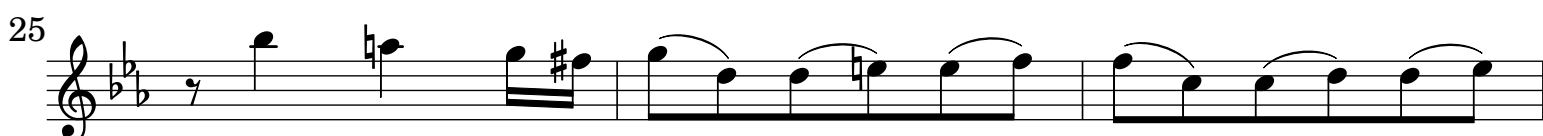
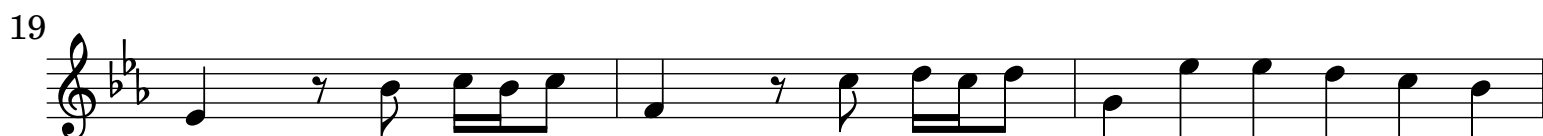
Measures 58-59: Rapid sixteenth-note passages.

Measures 60-61: Rapid sixteenth-note passages with a trill (tr) at the end.

Measures 62-63: Sixteenth-note passages.

Measures 64-65: Sixteenth-note passages with a trill (tr) over a quarter note.

[2.] Largo



[3.] Presto

Musical score for Flauto traverso, [3.] Presto, measures 6-38. The score is written in treble clef with a 12/8 time signature. The key signature is one sharp (F#). The score consists of 12 staves of music, with measure numbers 6, 9, 12, 15, 18, 20, 22, 25, 28, 30, 32, 35, and 38 indicated at the beginning of their respective staves. The music features a variety of rhythmic patterns, including eighth and sixteenth notes, and rests. A dynamic marking of *p* (piano) is present at measure 25. A first ending bracket is shown above measures 30-31, and a second ending bracket is shown above measures 32-33. The score concludes with a final measure at measure 38.

Musical score for Flauto traverso, measures 41 to 75. The score is written in treble clef and includes various musical notations such as notes, rests, accidentals, and phrasing slurs.

Measures 41-44: Measure 41 starts with a half note G4 (flat), followed by eighth notes. Measure 44 ends with a quarter rest.

Measures 47-50: Measure 47 starts with a quarter rest, followed by eighth notes. Measure 50 ends with a quarter note G4 (sharp).

Measures 52-55: Measure 52 starts with a quarter note G4 (sharp), followed by eighth notes. Measure 55 ends with a quarter note G4 (sharp).

Measures 58-61: Measure 58 starts with a quarter note G4 (sharp), followed by eighth notes. Measure 61 ends with a quarter note G4 (sharp).

Measures 64-67: Measure 64 starts with eighth notes. Measure 67 ends with a quarter note G4 (sharp).

Measures 70-73: Measure 70 starts with eighth notes. Measure 73 ends with a quarter note G4 (sharp).

Measures 75: Measure 75 starts with eighth notes. Measure 75 ends with a quarter note G4 (sharp) and a repeat sign.