

Concerto Cor Vigilans

Oboe II / Violino II

G. Muffat (1653-1704)

[1.] Sonata

Grave *t*

6 *t*

12 *Presto*

16

20

23

26 *Grave* *f.* *p.* *f.* *t* *t*

Detailed description: This block contains the first 26 measures of the Sonata. It begins with a treble clef, a key signature of two sharps (F# and C#), and a common time signature (C). The tempo is marked 'Grave'. The first measure has a fermata. Measures 1-5 are marked with a 't' (tutti). Measure 6 is marked with a 't'. Measures 12-23 are marked 'Presto' and feature a complex rhythmic pattern with many sixteenth notes. Measure 26 is marked 'Grave' and features dynamics of *f.*, *p.*, and *f.*, along with 't' markings. The piece ends with a repeat sign and a fermata.

[2.] Corrente

Allegro *t* *t* *t* *t*

9 *t* *t* *t* *t* *t* *t* *p.*

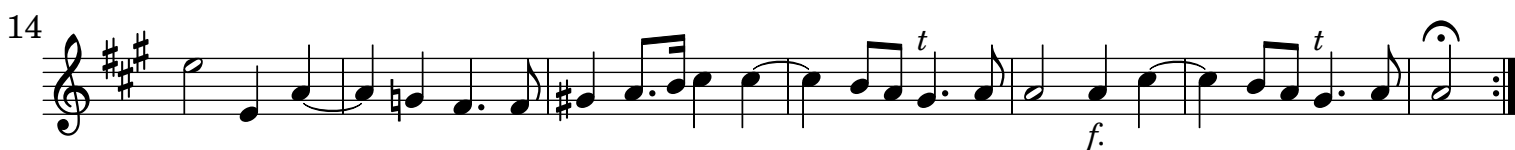
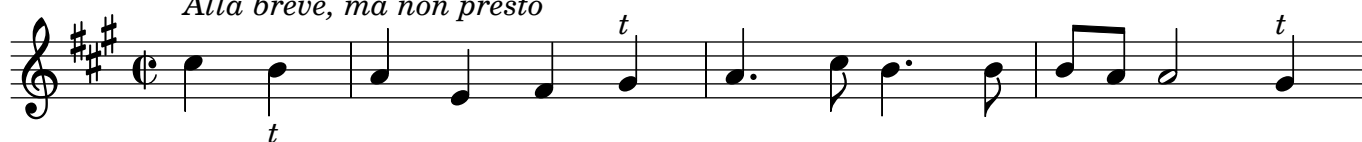
28 *f.* *t* *t* *t* *t* *t* *p.*

40 *Grave* *t* *t* *t* *t* *t* *t*

47 *t* *t* *t*

Detailed description: This block contains the first 47 measures of the Corrente. It begins with a treble clef, a key signature of two sharps (F# and C#), and a 3/4 time signature. The tempo is marked 'Allegro'. Measures 1-8 are marked with 't' (tutti). Measure 9 is marked with a 't'. Measures 10-27 are marked with 't' and a 'p.' (piano) dynamic. Measure 28 is marked with a 'f.' (forte) dynamic and 't'. Measures 29-39 are marked with 't'. Measure 40 is marked 'Grave' and features a 't'. Measures 41-46 are marked with 't'. Measure 47 is marked with 't'. The piece ends with a fermata.

[3.] Gavotta

Alla breve, ma non presto

[4.] Rondeau

Allegro