

Concerto per Oboe d'amore in La maggiore

A. Lotti (1667 - 1740)

Violino I

[1.] Allegro

4

6

8

11

14

16

18

20

22

24

27

p

pp

f

p

f

p

Violino I

Musical score for Violino I, measures 30-57. The score is written in treble clef with a key signature of two sharps (F# and C#). The music consists of several staves of notation, including eighth and sixteenth notes, rests, and dynamic markings such as *f* (forte) and *p* (piano). A *Fine* marking is present above measure 44, and a *Da Capo al Fine* instruction is located at the bottom right of the page.

Violino I

[2.] Affettuoso

8 *f*

4

8 *p* 7

19 *f*

23 5

32 5 *f* *pp* 3

43 *f*

47

51 *pp* Fine

8

66 6

75

Da Capo
al Fine

Violino I

[3.] Allegro

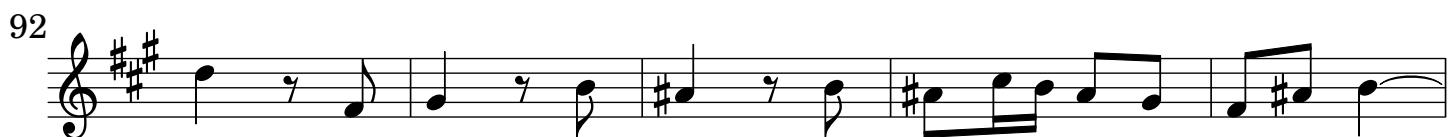
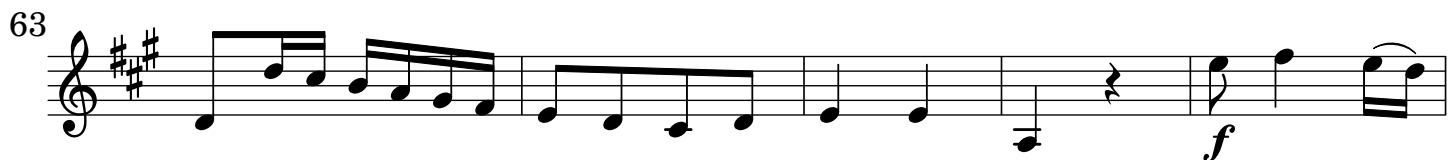
Musical score for Violino I, measures 4 to 49. The score is written in treble clef, key signature of two sharps (F# and C#), and 2/4 time signature. The tempo is marked [3.] Allegro. The score consists of 11 staves of music, with measure numbers 4, 6, 10, 15, 20, 24, 28, 32, 36, 40, 44, and 49 indicated at the beginning of each staff. The music features a variety of rhythmic patterns, including eighth and sixteenth notes, and rests. Dynamics markings include *f* (forte) and *p* (piano).

Measure 4: *f*

Measure 10: *p*

Measure 32: *p*

Violino I



*Da Capo
al Fine*