

Chari zephyri fontes

A. Lotti (1667 - 1740)

Basso continuo

[1.] Aria - Chari Zephyri fontes

5

10

14

18

23

27

31

36

41

45

50

Da Capo

Basso continuo

[2.] Recitativo - Inter ignes cælestes amabilis

Musical notation for the Recitativo section, measures 1-8. The key signature is two sharps (F# and C#), and the time signature is common time (C). The notation is written on a bass clef staff. Measures 1-4 feature a melodic line with a slur over the first four notes. Measures 5-8 continue the melodic line, ending with a double bar line.

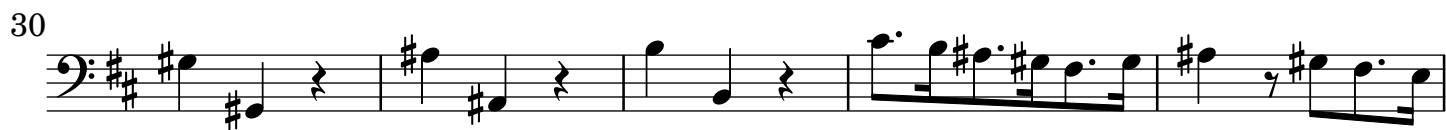
[3.] Ritornello

Musical notation for the Ritornello section, measures 1-16. The key signature is two sharps (F# and C#), and the time signature is 3/4. The notation is written on a bass clef staff. Measures 1-4 feature a rhythmic pattern of eighth and sixteenth notes. Measures 5-8 continue the rhythmic pattern. Measures 9-12 feature a more complex rhythmic pattern with slurs. Measures 13-16 continue the rhythmic pattern, ending with a double bar line.

[4.] Aria - Quasi phoenix orba prolis

Musical notation for the Aria section, measures 1-21. The key signature is two sharps (F# and C#), and the time signature is 3/4. The notation is written on a bass clef staff. Measures 1-4 feature a rhythmic pattern of eighth and sixteenth notes. Measures 5-8 continue the rhythmic pattern. Measures 9-12 feature a more complex rhythmic pattern with slurs. Measures 13-16 continue the rhythmic pattern. Measures 17-20 continue the rhythmic pattern. Measure 21 ends with a double bar line.

Basso continuo



[5.] Alleluja



