

# The Instrumental Music used in the Tempest

## Viola

M. Locke (1621-1677)

### The First Musick

#### [1.] Introduction

Musical score for the Introduction of 'The First Musick' for Viola. The score is in G minor (one flat) and common time (C). It consists of two staves. The first staff begins at measure 5 and ends with a repeat sign. The second staff begins at measure 8 and ends with a repeat sign.

#### [2.] Galliard

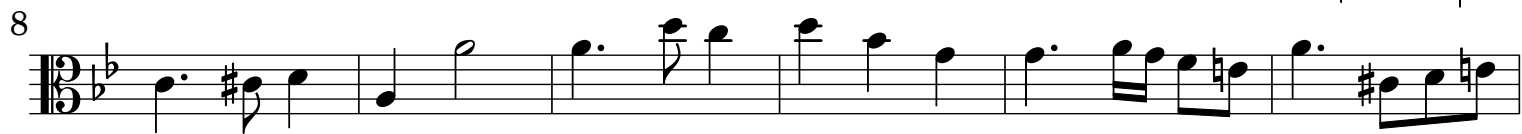
Musical score for the Galliard of 'The First Musick' for Viola. The score is in G minor (one flat) and 3/2 time. It consists of six staves. The first staff begins at measure 8 and ends with a repeat sign. The second staff begins at measure 13 and ends with a repeat sign. The third staff begins at measure 19 and ends with a repeat sign. The fourth staff begins at measure 25 and ends with a repeat sign. The fifth staff begins at measure 31 and ends with a repeat sign.

#### [3.] Gavot

Musical score for the Gavot of 'The First Musick' for Viola. The score is in G minor (one flat) and common time (C). It consists of four staves. The first staff begins at measure 5 and ends with a repeat sign. The second staff begins at measure 9 and ends with a repeat sign. The third staff begins at measure 13 and ends with a repeat sign.

## The Second Musick

## [4.] Sarabrand



## [5.] Lilk



## [6.] Curtain Tune in the TEMPEST



20

24

28

### [7.] The First Act Tune - Rustick Air

5

15

### [8.] The Second Act Tune - Minoit

5

13

### [9.] The Third Act Tune - Corant

4

Musical notation for the first piece, measures 4-11. The score is in 3/4 time, key of D major (one sharp), and consists of two staves. Measure 4 is the start of a first ending. Measure 11 is the end of a second ending.

[10.] The Fourth Act Tune - A Martial Jigge

Musical notation for 'The Fourth Act Tune - A Martial Jigge', measures 12-17. The score is in 3/4 time, key of B minor (two flats), and consists of three staves. Measure 12 is the start of a first ending. Measure 17 is the end of a second ending.

[11.] Conclusion - A Canon 4 in 2

Musical notation for 'Conclusion - A Canon 4 in 2', measures 7-36. The score is in 3/4 time, key of B minor (two flats), and consists of six staves. Measure 7 is the start of a first ending. Measure 13 contains a first ending with two endings. Measure 18 is the start of a second ending. Measure 24 is the start of a first ending. Measure 30 is the start of a first ending. Measure 36 contains a first ending with two endings.