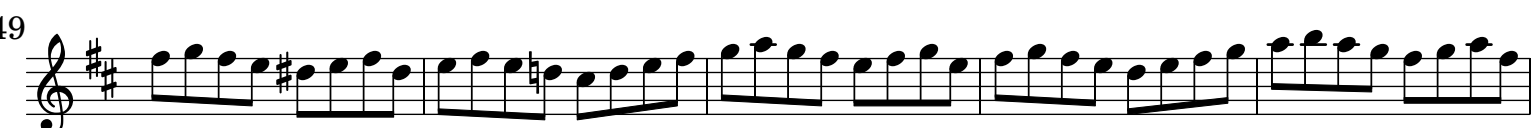
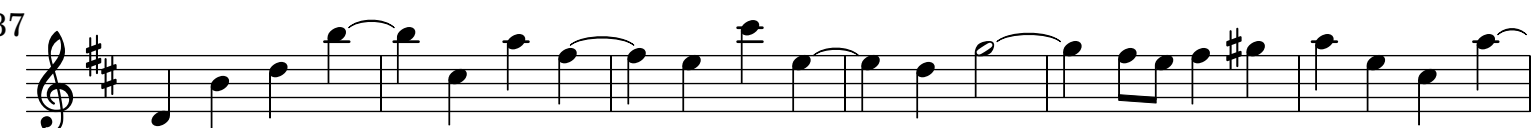


# Ouverture si minore [BWV 1067]

Flauto traverso

J. S. Bach (1685-1750)

[1. Ouverture]



54 *tr* Solo

59

63

68

72

76 Tutti

81 *f*

88

92 Solo

97

101 (Tutti)

106

Detailed description: This image shows a page of musical notation for a flute part, measures 54 through 106. The music is written on a single staff in treble clef with a key signature of two sharps (F# and C#). The tempo and dynamics are indicated by various markings: 'Solo' appears at measures 54 and 92, 'Tutti' at measures 76 and 101, and 'f' (forte) at measure 81. A trill is marked at measure 54. The notation includes eighth and sixteenth notes, rests, and slurs. The page number '2' is in the top left, and the instrument name 'Flauto traverso' is at the top center.

111

116

Solo

121

125

5

134

Tutti

139

(Solo)

144

(Tutti)

150

(Solo)

155

159

163

167

172 (Tutti)

177

182

187

194

199 *Lentement*

206

212

1. 2.

[2.] Rondeau

4

14

20

26

31

35

41

47

Detailed description: This block contains the first system of musical notation for the Flauto traverso part, spanning measures 14 to 47. It consists of seven staves of music in treble clef with a key signature of two sharps (F# and C#). The music features a variety of rhythmic patterns, including eighth and sixteenth notes, and rests. There are several trills and slurs throughout the passage.

### [3.] Sarabande

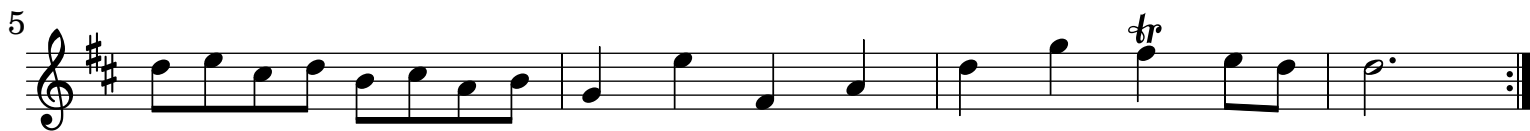
6

11

25

Detailed description: This block contains the second system of musical notation, which is the Sarabande section. It is in treble clef with a key signature of two sharps (F# and C#) and a 3/4 time signature. The music is characterized by a slower tempo and features several trills (marked 'tr') and slurs. The section concludes with a double bar line and repeat dots.

## [4.] Bourrée I - alternativement



## [5.] Bourrée II



## [6.] Polonaise - Moderato e staccato

5

9

## [7.] Double

3

5

6

8

10

12

13

## [8.] Minuet



9



17



## [9.] Badinerie



6



12



21



26



31



36

