

Sonata III en quatuor [Oeuvre XII]

Viola di gamba

L-G. Guillemain (1705-1770)

[1.] Allegro Moderato

14

19

23

31

37

42

47

52

57

64

70

75

79

Viola di gamba

85

93

97

104

109

115

121

127

133

[2.] Larghetto

6

10

14

[3.] Aria - Gratoso



2

10

17

24

31

38

43

50

57

65

Dal Segno

[4.] Allegro

9

19

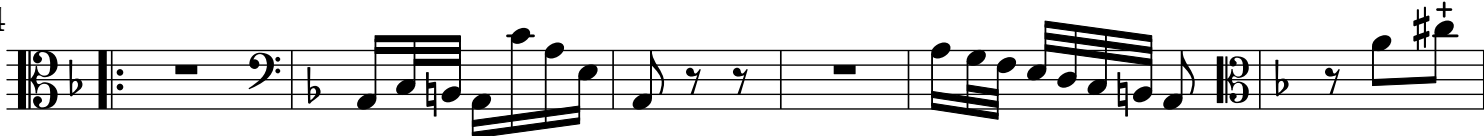
28



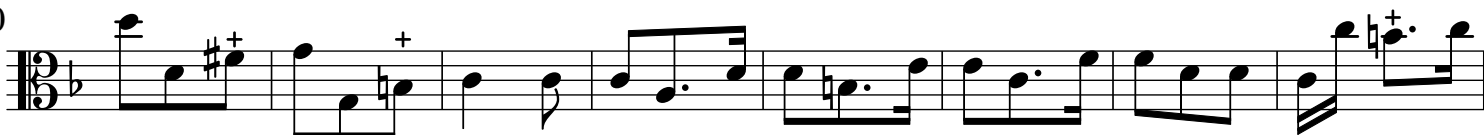
36



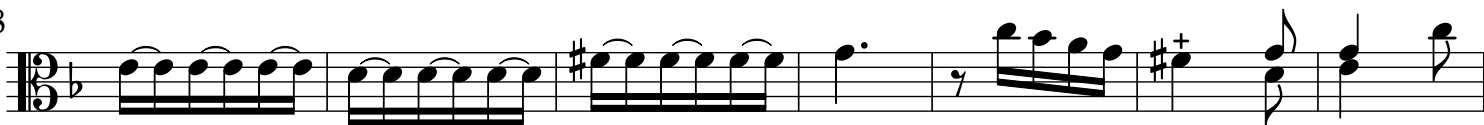
44



50



58



65



72



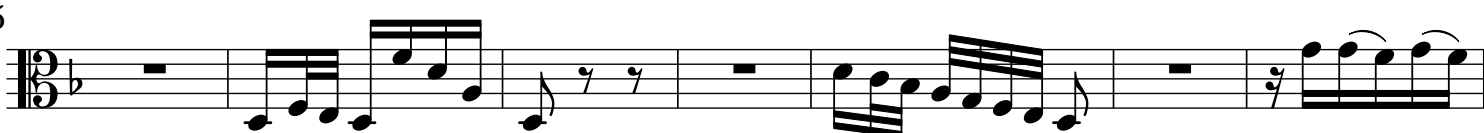
81



89



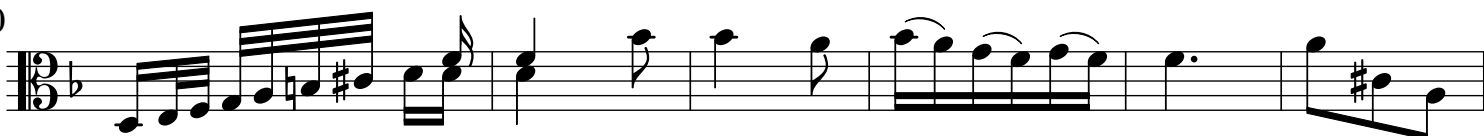
95



102



110



116

