

Sonata IV en quatuor [Œuvre XII]

Violon

L-G. Guillemain (1705-1770)

[1.] Allegro Moderato

7

10

13

17

22

26

30

33

36

38

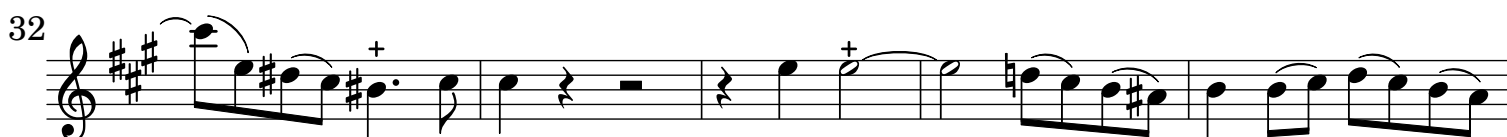
40

Musical score for Violin, measures 44 to 80. The score is written in treble clef with a key signature of two sharps (F# and C#). The music features a variety of rhythmic patterns, including eighth and sixteenth notes, and rests. Measure 44 begins with a repeat sign and a triplet of eighth notes. Measures 49-52 contain complex rhythmic patterns with triplets and sixteenth notes. Measures 55-60 show a melodic line with eighth notes and rests. Measures 61-66 continue the melodic development with eighth notes and rests. Measures 67-73 feature a series of triplets of eighth notes. Measures 74-79 consist of a sequence of triplets of eighth notes. Measure 80 concludes with a melodic phrase and rests.

Musical score for Violin, measures 84 to 127. The score is written in treble clef with a key signature of three sharps (F#, C#, G#). The music features various rhythmic patterns, including eighth and sixteenth notes, and rests. Fingerings are indicated by numbers 1-3, and breath marks (+) are present throughout. The score concludes with a double bar line and repeat dots.

Measures 84, 89, 95, 98, 102, 107, 111, 116, 120, 123, 125, 127.

[2.] Aria Gratoso



[3.] Altro



27



33

38

Da Capo

Detailed description: This block contains the first system of music, spanning measures 27 to 38. It consists of three staves of music in treble clef with a key signature of two sharps (F# and C#). The first staff (measures 27-32) features a rhythmic pattern of eighth and sixteenth notes. The second staff (measures 33-37) continues this pattern with some rests. The third staff (measures 38) concludes the section with a double bar line and repeat dots, labeled 'Da Capo'.

[4.] Allegro



9

16

22

28

33

38

43

50

Detailed description: This block contains the second system of music, spanning measures 4 to 50. It consists of ten staves of music in treble clef with a key signature of two sharps (F# and C#) and a 2/4 time signature. The first staff (measures 4-8) includes a fermata and a '2' above a note. The second staff (measures 9-15) features a complex rhythmic pattern with many sixteenth notes. The third staff (measures 16-21) continues with similar rhythmic complexity. The fourth staff (measures 22-27) has a '+' above a note. The fifth staff (measures 28-32) continues the rhythmic pattern. The sixth staff (measures 33-37) has a '+' above a note. The seventh staff (measures 38-42) has a '+' above a note. The eighth staff (measures 43-49) has a '+' above a note. The ninth staff (measures 50) includes a fermata and a '2' above a note, ending with a '+' above a note.

Musical score for Violin, measures 59 to 125. The score is written in treble clef with a key signature of two sharps (F# and C#). The music features a variety of rhythmic patterns, including eighth and sixteenth notes, and rests. Measure numbers are indicated at the beginning of each line: 59, 65, 70, 79, 84, 89, 95, 100, 108, 115, 120, and 125. The score includes various musical notations such as slurs, accents, and dynamic markings.