

# Sinfonia, Allemande, Correnti e Sarabande a 5 - Op. V

## Violino II

G. M. Bononcini (1642-1778)

### [1.] Sinfonia a 5 per introduzione

Adagio

Allegro

*largo*

7

12

19

26

### [2.] Allemanda a 5 - Allegro

7

13

18

### [3.] Corrente a 5

10

29

36

[4.] Sarabanda a 5

[5.] Allemanda a 5

*Allegro*

7

*Adagio*

13

*Allegro*

21

[6.] Corrente a 5

6

11

16

## [7.] Sarabanda a 5

Musical notation for Sarabanda a 5, measures 1-5. The piece is in G minor (one flat) and 5/4 time. The first staff shows measures 1-4, and the second staff shows measures 5-8. The key signature is one flat (Bb) and the time signature is 5/4.

## [8.] Allemanda a 5

Musical notation for Allemanda a 5, measures 1-19. The piece is in G minor (one flat) and 5/4 time. The first staff shows measures 1-5, the second staff shows measures 6-11, the third staff shows measures 12-18, and the fourth staff shows measures 19-24. The key signature is one flat (Bb) and the time signature is 5/4.

## [9.] Corrente a 5

Musical notation for Corrente a 5, measures 1-27. The piece is in G minor (one flat) and 5/4 time. The first staff shows measures 1-8, the second staff shows measures 9-16, the third staff shows measures 17-24, and the fourth staff shows measures 25-27. The key signature is one flat (Bb) and the time signature is 5/4.

## [10.] Sarabanda a 5

Musical notation for Sarabanda a 5, measures 1-5. The piece is in G minor (one flat) and 5/4 time. The first staff shows measures 1-4, and the second staff shows measures 5-8. The key signature is one flat (Bb) and the time signature is 5/4.

[11.] Allemanda a 5

*Allegro*

2



*Adagio*



*Allegro*



[12.] Corrente a 5. Largo

3



[13.] Sarabanda a 5



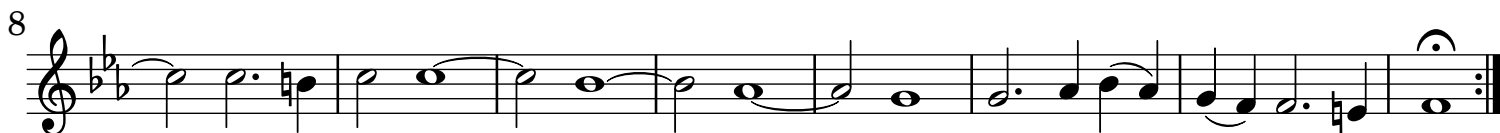
## [14.] Corrente a 5



## [15.] Sarabanda a 5



## [16.] Corrente a 5. Largo



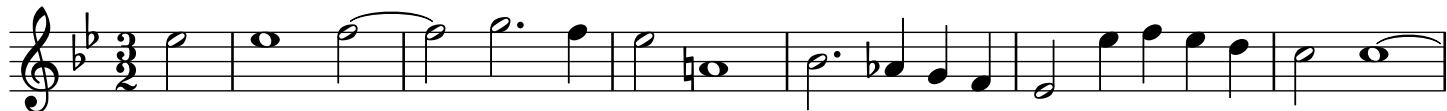
## [17.] Sarabanda a 5



[18.] Allemanda a 5. Allegro



[19.] Corrente a 5



[20.] Sarabanda a 5. Adagio

