

# Concerto Fa WV L:d7

## Oboe II

J. F. Fasch (1688-1758)

[1.] Allegro

4

8

13

17

21

25

28

31

35

*t*

*t*

*Soli*

*Tutti*

*t*

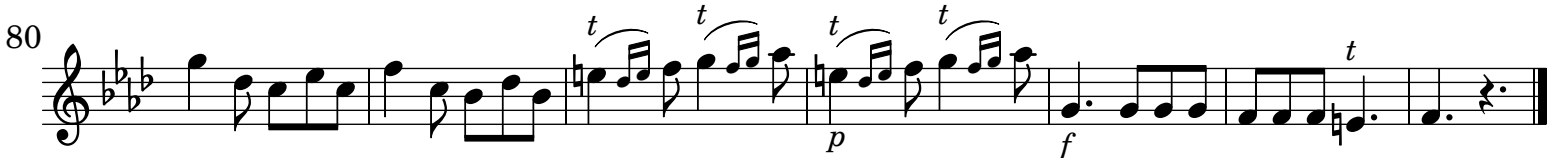
*t*

*f*



Musical score for Oboe II, measures 92-128. The score is written in treble clef with a key signature of one flat (B-flat). The piece is in 3/4 time. The notation includes various dynamics such as *pp*, *f*, and *t* (tutti), and articulation marks like accents and slurs. The music features a mix of eighth and sixteenth notes, often beamed together, and some rests. The score is divided into systems, with measure numbers 92, 95, 99, 104, 108, 112, 116, 119, 122, 125, and 128 marking the beginning of each system.

## [2.] Andante



[3.] Allegro

Musical score for Oboe II, measures 1-95. The score is in 3/4 time with a key signature of one flat. It features various dynamics (p, f, pp, Tutti, Soli), articulations (accents, staccato), and time signature changes (4/4, 2/4).

Measure 1: *p*, *f*, *t*  
 Measure 9: *f*  
 Measure 22: *f*  
 Measure 33: *t*, *t*, *Soli*, *t*  
 Measure 40: *p*, *pp*  
 Measure 50: *p*, *pp*  
 Measure 58: *f*  
 Measure 64: *p*, *Tutti*, *Soli*  
 Measure 71: *f*  
 Measure 78: *Tutti*, *t*  
 Measure 90: *f*  
 Measure 95: *t*, *Soli*, *t*, *p*

101 *p*

106 *Tutti t* *f* **4** *f* **3**

121 *p* *f* *p*

126 *f*

131 *t* *p* *f*

136

142

150 *t* *p*

158

165 *f* *t* *p* *f*

172

181 *t* **4**

192 *f* *t* *t*

Detailed description: This is a page of a musical score for Oboe II, spanning measures 101 to 192. The music is written in a single staff on a treble clef with a key signature of one flat (B-flat). The score includes various musical notations such as slurs, accents, and dynamic markings. Measure 101 begins with a piano (*p*) dynamic. Measure 106 is marked *Tutti* and *t* (tutti), starting with a forte (*f*) dynamic, and contains a 4-measure rest followed by a 3-measure rest. Measure 121 features piano (*p*) and forte (*f*) dynamics. Measure 126 is marked forte (*f*). Measure 131 includes *t* (tutti) markings and piano (*p*) and forte (*f*) dynamics. Measure 150 has a *t* marking and a piano (*p*) dynamic. Measure 165 features forte (*f*) dynamics and *t* markings. Measure 181 includes a *t* marking and a 4-measure rest. Measure 192 starts with a forte (*f*) dynamic and includes *t* markings. The score concludes with a double bar line at the end of measure 192.