

Suite: Issé, Pastorale Heroïque

Quinte

A. C. Destouches (1672-1749)

[1.] Ouverture [Prologue, p. 1]

8

15

26

36

45

55

61

[2.] Air, Pour les Hesperides, Rondeau [Prologue, p. 13]

13

33

52

[3.] Premier Air pour les Peuples [Prologue, p. 53]

Musical score for Premier Air pour les Peuples. It consists of three staves of music in G major (one sharp) and common time. The first staff starts at measure 10 and ends with a first ending bracket. The second staff starts at measure 18 and ends with a second ending bracket. The third staff continues the melody and includes both first and second ending brackets.

[4.] Premier Menuet [Prologue, p. 55]

Musical score for Premier Menuet. It consists of two staves of music in G major (one sharp) and 3/4 time. The first staff starts at measure 9 and ends with a first ending bracket. The second staff continues the melody and ends with a second ending bracket.

[5.] Deuxième Menuet - Les Hautbois alternativement avec les Violons

Musical score for Deuxième Menuet. It consists of two staves of music in G major (one sharp) and 3/4 time. The first staff starts at measure 9 and includes a trill symbol above a note. It ends with a first ending bracket. The second staff continues the melody and ends with a second ending bracket.

[6.] Deuxième Air, pour les Peuples - Gay [Prologue, p. 57]

Musical score for Deuxième Air, pour les Peuples - Gay. It consists of three staves of music in G major (one sharp) and common time. The first staff starts at measure 24 and ends with a repeat sign. The second staff continues the melody and includes first and second ending brackets. The third staff continues the melody and also includes first and second ending brackets.

[7.] Prélude - Lentement [Premier Acte, p. 79]

Musical score for Prélude - Lentement. It consists of two staves of music in G major (one sharp) and 3/4 time. The first staff starts at measure 12 and includes rests. The second staff continues the melody and includes rests.

[8.] Marche [Premier Acte, p. 93]



11



[9.] Deuxième Air [Premier Acte, p. 117]



10



[10.] Air tendre [Premier Acte, p. 118] tacet

[11.] Passepied, Rondeau [Premier Acte, p. 120]

*Fin*

[12.] Premier Air, pour des Bergers, Rondeau [Acte deuxième, p. 149]



13



26



40



[13.] Deuxième Air, Rondeau d'Haut-bois [Deuxième Acte, p. 153] tacet

[14.] Gigue [Deuxième Acte, p. 154]

First staff of music for Gigue, measures 1-5. The key signature has one sharp (F#) and the time signature is 6/4. The notation includes a fermata over the first measure and a trill over the eighth note in the fifth measure.

6

Second staff of music for Gigue, measures 6-10. It features a trill in measure 7 and first/second endings in measures 9 and 10.

Third staff of music for Gigue, measures 11-17. It contains a repeat sign at the beginning and a trill in measure 17.

18

Fourth staff of music for Gigue, measures 18-22. It includes first and second endings in measures 21 and 22.

[15.] Premier Rigaudon [Deuxième Acte, p. 158]

First staff of music for Premier Rigaudon, measures 1-5. The key signature has one sharp (F#) and the time signature is 2/4. The notation consists of a series of eighth notes.

Second staff of music for Premier Rigaudon, measures 6-10. It continues the eighth-note pattern from the first staff.

[16.] Deuxième Rigaudon [Deuxième Acte, p. 159]

First staff of music for Deuxième Rigaudon, measures 1-5. The key signature has one flat (Bb) and the time signature is 2/4. The notation consists of a series of eighth notes.

10

Second staff of music for Deuxième Rigaudon, measures 6-10. It continues the eighth-note pattern from the first staff.

[17.] Marche pour les Ministres de Dodonne, Gravement [Troisième Acte, p. 181]

First staff of music for Marche pour les Ministres de Dodonne, measures 1-5. The key signature has one sharp (F#) and the time signature is common time (C). The notation includes a trill in measure 3.

10

Second staff of music for Marche pour les Ministres de Dodonne, measures 6-10. It continues the melodic line from the first staff.

19

Third staff of music for Marche pour les Ministres de Dodonne, measures 11-15. It continues the melodic line from the first staff.

[18.] Premier Air, pour les Faunes, Pesamment [Troisième Acte, p. 214]



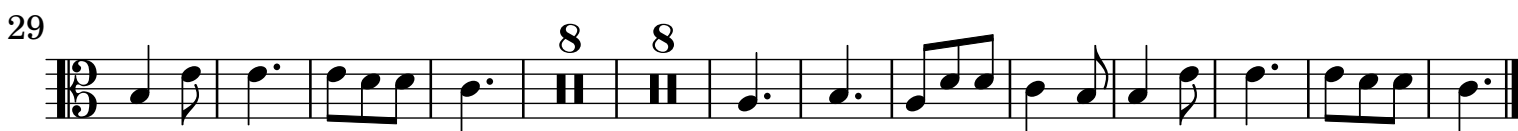
[19.] Deuxième Air, pour les Faunes [Troisième Acte, p. 216]



[20.] Premier Passepied [Troisième Acte, p. 218]



[21.] Deuxième Passepied [Troisième Acte, p. 219]



[22.] Sarabande, Lentement [Acte Quatrième, p. 234]

Musical notation for Sarabande, measures 1-10. The piece is in 3/8 time, B-flat major, and begins with a repeat sign. The first ending (1.) ends with a double bar line and a repeat sign, leading to the second ending (2.) which concludes the phrase.

11

Musical notation for Sarabande, measures 11-22. This section continues the melodic line from the previous measures.

23

Musical notation for Sarabande, measures 23-34. This section concludes with a repeat sign and two endings (1. and 2.).

[23.] Marche des Nations - Gay [Cinquième Acte, p. 270]

Musical notation for Marche des Nations, measures 1-13. The piece is in 3/8 time, B-flat major, and begins with a repeat sign. It features two endings (1. and 2.).

14

Musical notation for Marche des Nations, measures 14-24. This section continues the rhythmic and melodic pattern.

25

Musical notation for Marche des Nations, measures 25-34. This section concludes with a repeat sign and two endings (1. and 2.).

[24.] Air, pour les Européens - Gravement [Cinquième Acte, p. 288]

Musical notation for Air, pour les Européens, measures 1-10. The piece is in common time (C), D major, and begins with a repeat sign. It features two endings (1. and 2.).

Musical notation for Air, pour les Européens, measures 11-24. This section continues the piece and concludes with a repeat sign and two endings (1. and 2.).

[25.] Menuet - Gay [Cinquième Acte, p. 289]

Musical notation for Menuet, measures 1-8. The piece is in 3/8 time, D major, and begins with a repeat sign. It concludes with a double bar line and a repeat sign.

9

Musical notation for Menuet, measures 9-17. This section continues the piece and concludes with a repeat sign and two endings (1. and 2.).

