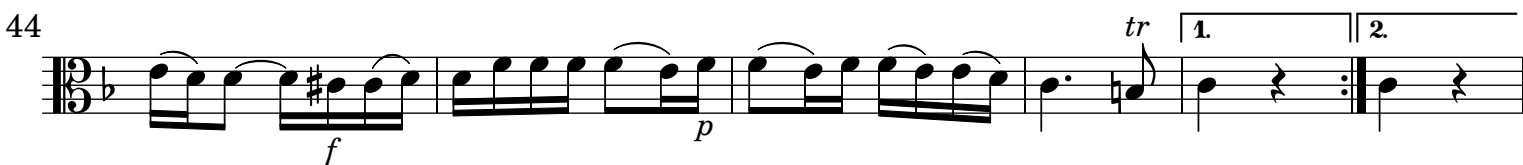
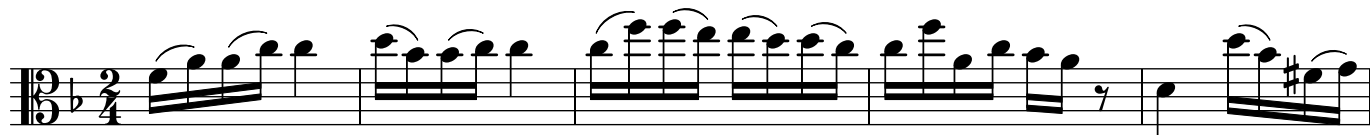


[2.] Allegretto



59

66 *tr*

71 *tr*

77

82

89

94 *p*

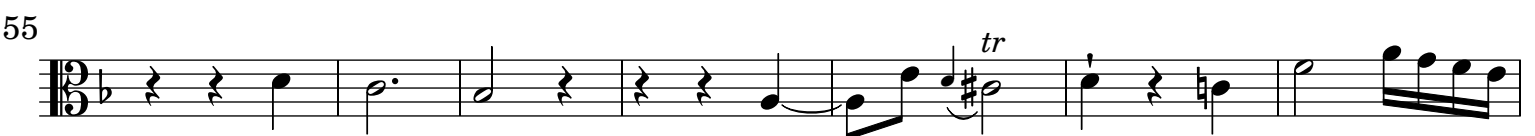
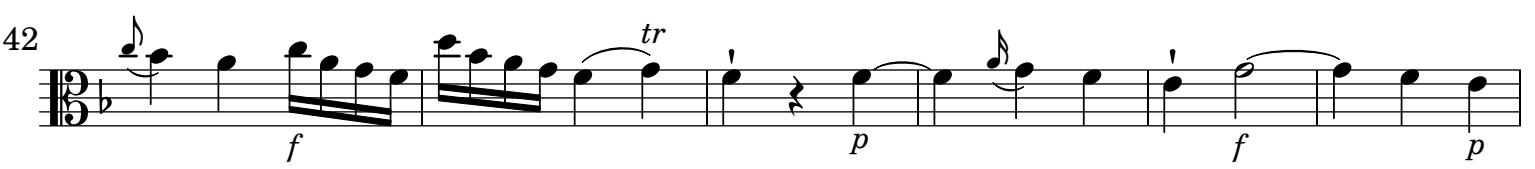
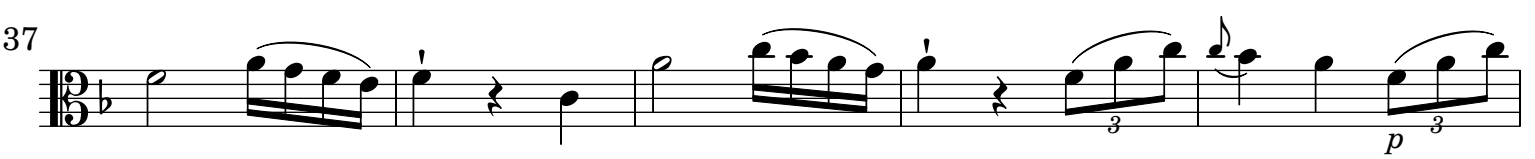
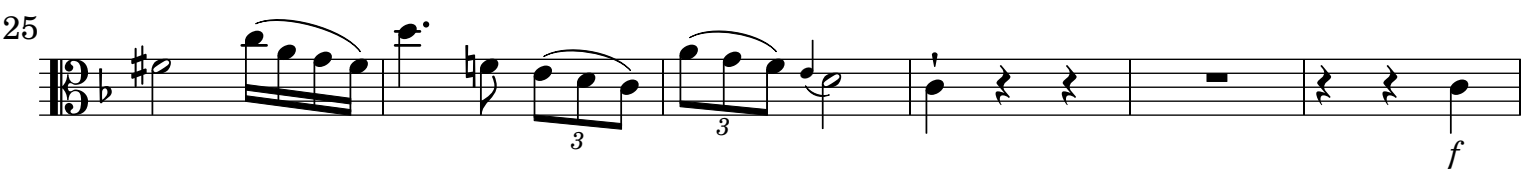
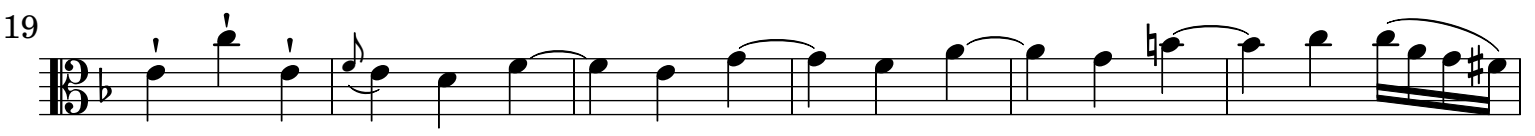
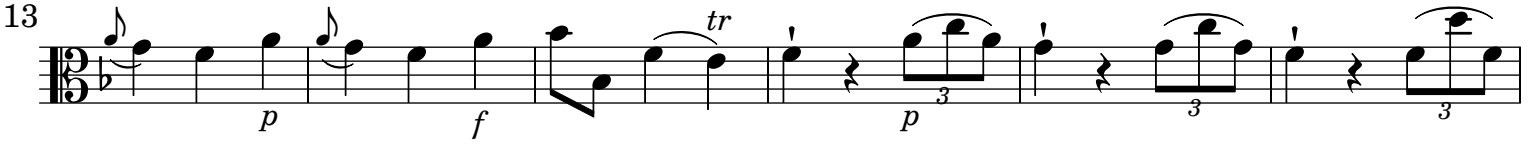
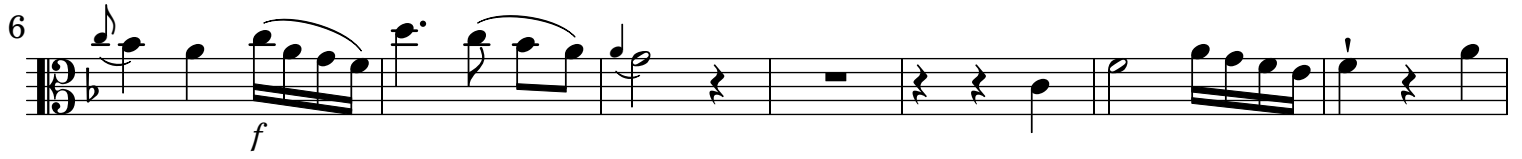
99 *f* *p* *f* *tr*

104 *p* *f*

109 *p* *f* *tr* 1. 2.

Viola

[3.] Allegro



62

67

73

78

83

91

96

101

108

114

f

p

f

p

f

tr

f

p

f

tr

Detailed description: This image shows a page of musical notation for the Viola part of C.P.E. Bach's Trio Wq. 163. The score is written in bass clef with a key signature of one flat (B-flat). It consists of ten staves of music, each starting with a measure number. The notation includes various rhythmic values, slurs, trills (tr), and dynamic markings such as *f* (forte) and *p* (piano). Triplet markings (3) are used in several measures. The piece concludes with a double bar line at the end of the final staff.