

Sinfonia Hamburg Wq 182/6

Viola

C. Ph. E. Bach (1714-1788)

[1.] Allegro di molto

cres -
p *mf* *f*

6

11 *p*

16 *f*

21

26 *f* 2

33 *ff* *p* *cres -*

39 *mf* *f* *- cen -* *- do*

45 *p*

51 *f* *tr* *cres -* *- cen -* *- do* *mf* *f*

57

62

67

73

78

85

90

95

[2.] Poco andante

10

11

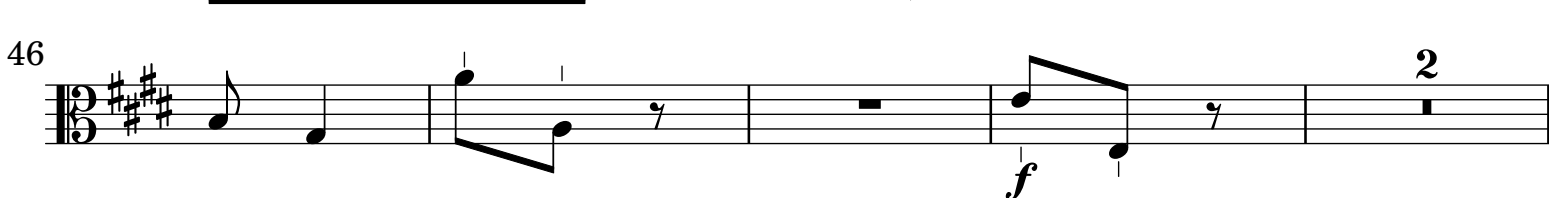
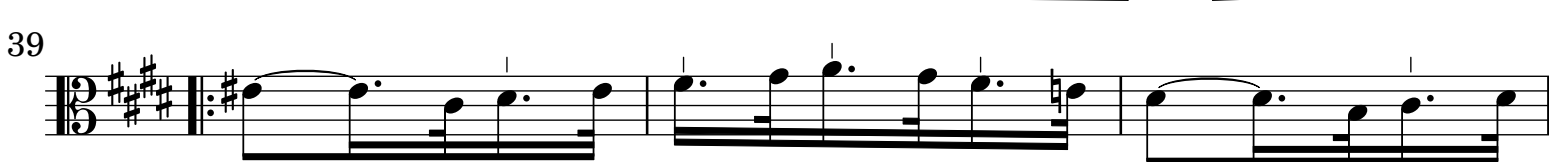
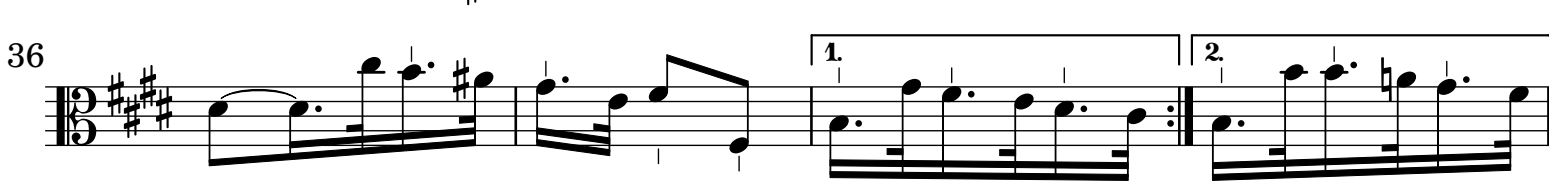
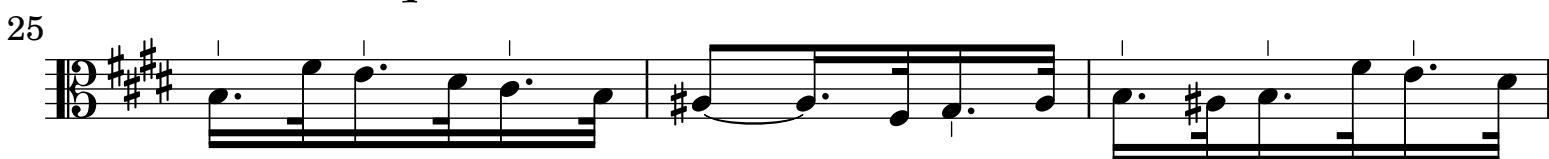
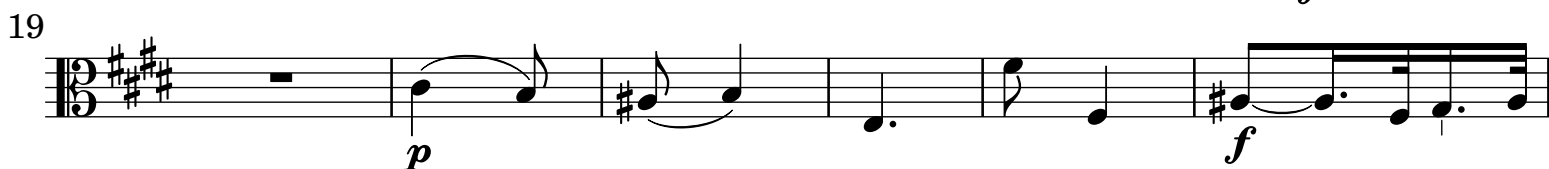
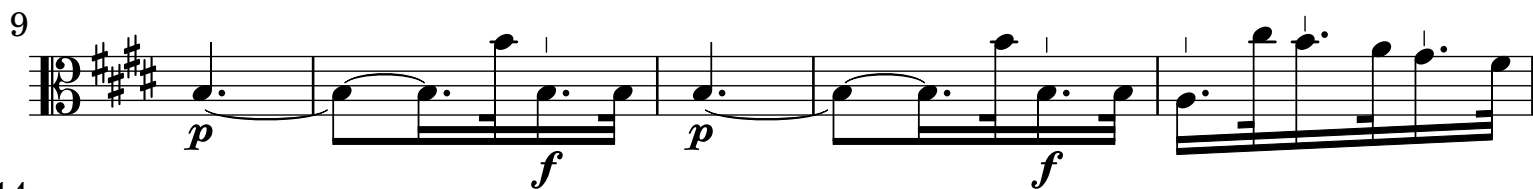
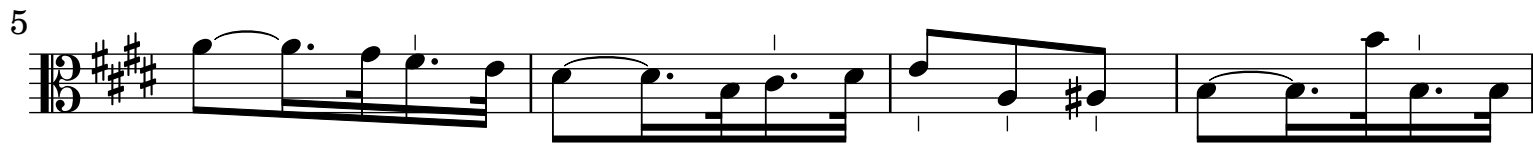
21

30

41

54

[3.] Allegro spiritoso



52 *p*

57 *f*

61

65

69

73 *p* *f* *p*

78 *f*

82

86

90

95 1. 2.

98 *ff*

Detailed description: This image shows a page of musical notation for the Viola part of C. P. E. Bach's Symphony No. 182/6. The score is written in bass clef with a key signature of three sharps (F#, C#, G#). It consists of ten staves of music, numbered 52 through 98. The notation includes various rhythmic values, slurs, and dynamic markings. The dynamics range from piano (*p*) to fortissimo (*ff*). A first and second ending are indicated at measures 95-96. The piece concludes with a double bar line at measure 98.