

Concerto per Violoncello [Wq 170, H. 432]

Viola

C. Ph. E. Bach (1714-1788)

[1.] Allegro assai

5

9 *p*

13 *f*

17 *mf*

20 *p* *f*

24 *p* *f*

27 *Fine* 3 *pp*

34 *f* 2 2 3 *coll'arco* *pp*

48 11 *pizzicato* *f* *f* *p*

64 *f*

68 *p*

71 *f*

74

78 *f* *pp*

86 *f* *p*

91 *f* *p*

95 *f* *p*

99 *f*

110 *p*

116 *f* 5

125 *f* *f* *p*

130 *f*

135 *mf* *p*

139

Detailed description: This image shows a page of a musical score for Viola, numbered 2. The score is in 3/8 time and consists of 13 measures, numbered 71 through 139. The key signature has one sharp (F#). The dynamics range from fortissimo (f) to pianissimo (pp). The score includes various musical notations such as slurs, accents, and fingerings (e.g., 2, 7, 5). The piece concludes with a fermata on the final note of measure 139.

142 *p* *f*

146 *p*

150 *f*

154 *p*

158 *f* 3

165 *f* 4

173 *f* *p*

177 *fp* *f*

182 2 *pp*

188 *pizzicato* *coll'arco*

193 *f*

197 6 *f* *f* *p*

207 *f* *p* *f* *Dal* 

[2.] Andante

Musical score for Viola, measures 4 to 53. The score is in 6/8 time and consists of 11 staves. The key signature has one sharp (F#). The dynamics range from *pp* (pianissimo) to *f* (forte). The score includes various musical notations such as slurs, accents, and fingerings (e.g., 5, 2). Measure numbers 4, 5, 9, 12, 16, 21, 29, 33, 36, 40, 46, 50, and 53 are indicated at the beginning of their respective staves.

56 *p* *f* *p*

60 *p* *f*

64 *f* *f* *p*

68 *f* *p* *f* *p*

72 *f* *p*

76 *f* *pp* *f*

80 *p* *f* *p* *f* *p*

84 *f* *p*

89 *f* 5 *f*

97 *f* *p*

101 *f* *p*

104 *f* *p*

107 *p* *f*

Detailed description: This image shows a page of musical notation for the Viola part of a concerto. The score is written in 3/4 time and consists of ten staves of music, numbered 56 to 107. The notation includes various rhythmic values such as eighth and sixteenth notes, rests, and dynamic markings like *p* (piano) and *f* (forte). There are also articulation marks like slurs and accents. A fingering '5' is indicated above a measure in staff 89. The key signature has one flat (B-flat).

[3.] Allegro assai

6 *p* *f*

5

9 *p*

12 *f*

15 *tr*

18 *p*

21 *f*

24 *p* *f*

27 *p* *f* *Fine* *f*

31

35

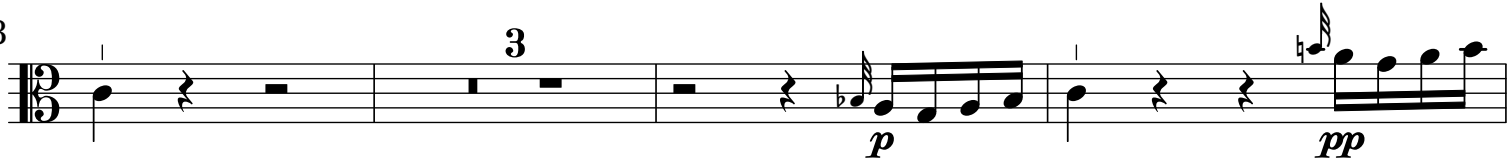
39

43 *p* *f* *p*

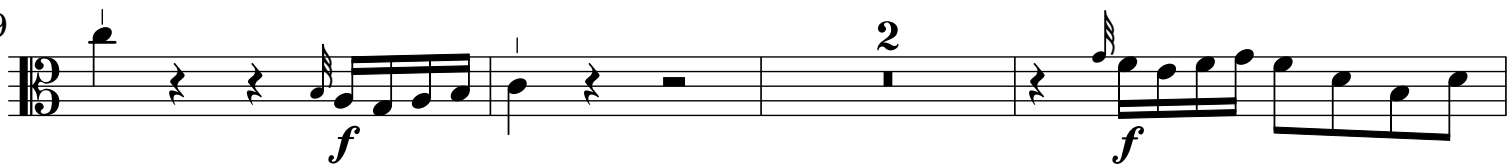
49



53



59



64



68



72



76



80



83



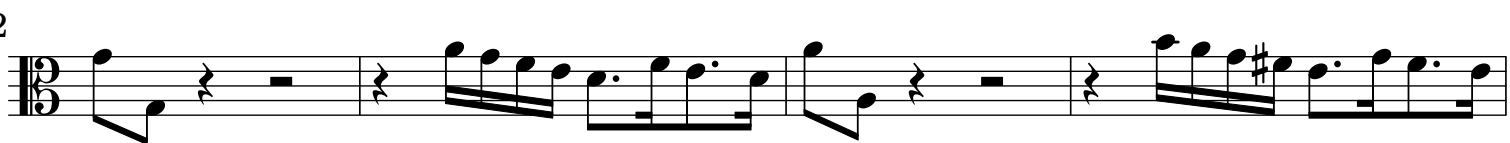
86



89



92



96



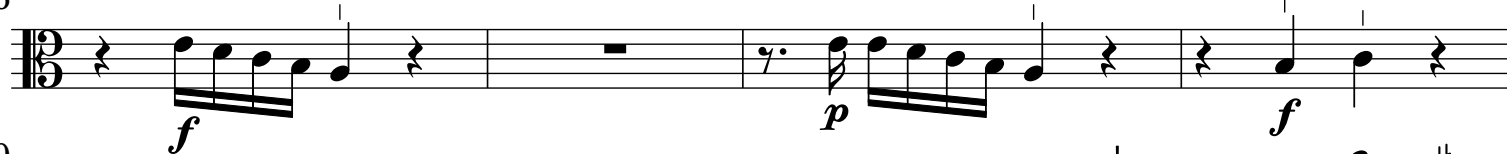
178



182



186



190



194



198



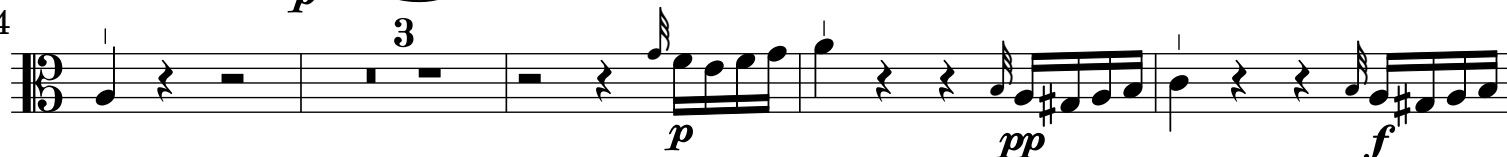
205



209



214



221



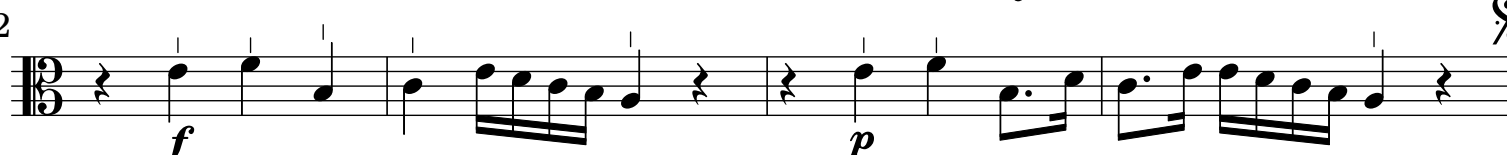
226



229



232

Dal
Coda