

Concerto per Flauto Wq 22

Viola

C. Ph. E. Bach (1714-1788)

[1.] Allegro

6
11
17
23
29
35
41
45
65
87
92
97
103

f *p* *f* *p* *f* *f* *f* *f* *f* *f* *p* *tr* *p*

109 *f* *p*

115

119 *f* *p* 4

128 *f* *p* 4 *f* *p* *f*

141 *f* *p*

150

160 *f*

167 *f* *p* 9

181 *pp*

187 *f* 7

199

204

210 *p*

216 *f*

221

226 **4** **10**

245 **f** **p** **f**

251 **p** **f** **p**

257 **f** **11** **4** **p** **f**

277

282 **p**

292 **3** **13** **fp**

314

319

324 **p** **f**

329 **p** **f**

334

339

4 Viola
[2.] Un poco Andante

Musical score for Viola, measures 4 to 45. The score is in 3/4 time and D major. It features a variety of rhythmic patterns, including eighth and sixteenth notes, often beamed together. Dynamic markings include *p*, *f*, *pp*, and *f*. Trills are indicated with *tr*. The score is divided into systems of three staves each, with measure numbers 4, 5, 9, 13, 17, 20, 23, 26, 29, 32, 35, 38, 41, and 45 marking the beginning of each system.

6 Viola
[3.] Allegro di molto

The image shows a musical score for Viola, measures 6 through 28. The music is in 3/4 time and features a continuous eighth-note pattern. The score is divided into systems of two staves each. The key signature has one flat (B-flat). The tempo is marked 'Allegro di molto'. The dynamics are marked with *p* (piano) and *f* (forte). The pattern consists of eighth notes in the right hand and eighth notes in the left hand, often with a grace note in the left hand. The pattern is consistent throughout, with some variations in the final measures (28-32) where the left hand has a grace note and the right hand has a triplet of eighth notes. The final measure (32) ends with a sharp sign (#) on the right hand.

31



33



36



39



42



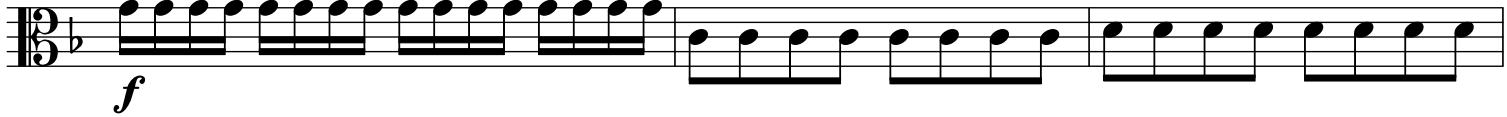
45



48



51



54



57



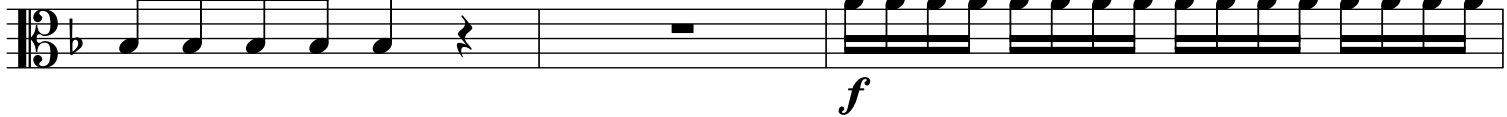
61



64



67



70



Viola

72

74

76

78

80

82

84

86

89

91

93

96

99

102

105



108



111



114



117



120



126



129



132



135



138



140



142



144



146



148



150



152



154



156

*p*

158

*f*

160



163



165

*p*

168



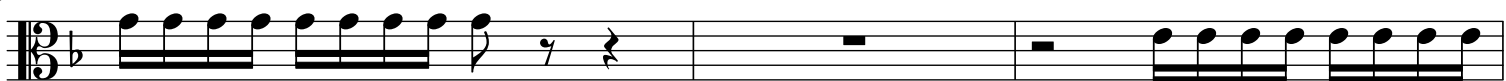
171

*f*

173



175



178 

185 

188 

194 

196 

198 

201 

204 

207 

210 

213 

216 

220 

222 

224 *f* *p*

226

229

232 *f*

235

237

239

241 *p*

243 *f*

245 *p*

247 *f*

249

251

253

Detailed description: This image shows a page of musical notation for the Viola part of C.P.E. Bach's Concerto for Flute, Wq. 22. The score consists of 12 staves, numbered 224 to 253. The music is in 3/4 time and B-flat major. It features a variety of rhythmic patterns, including eighth and sixteenth notes, and rests. Dynamic markings such as *f* (forte) and *p* (piano) are used throughout. Trills and triplets are also present, particularly in measures 249 and 251. The piece concludes with a final cadence in measure 253.