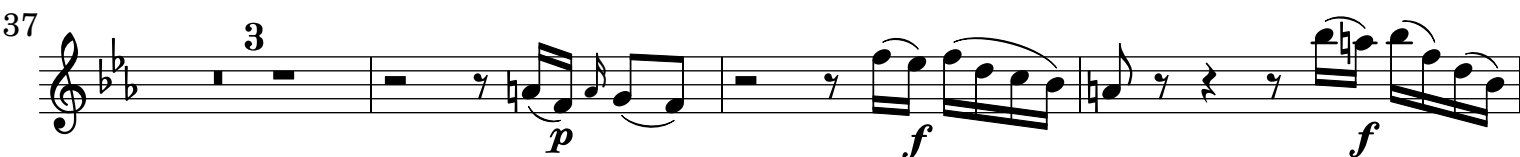
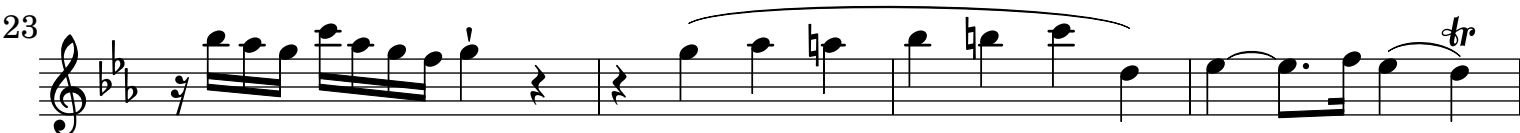
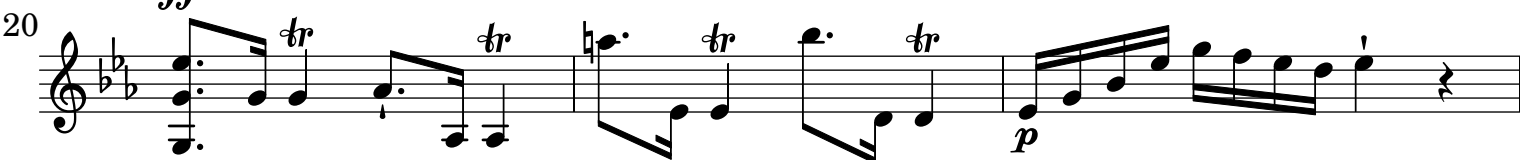
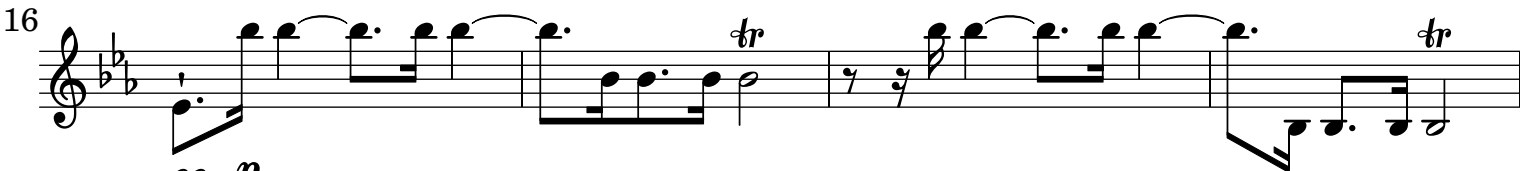


Concerto per il Cembalo Wq. 43,3

Violino I

C. P. E. Bach

[1.] Allegro



43 *f* 3 *f*

50 *p* 2 *p*

56 2 *f*

61 *tr* *tr* *tr*

64 *tr*

67

69 *p* *tr* *tr*

73 *ff* *tr* *tr* *tr* *tr* *p*

76 *tr*

80 *tr* *tr*

84 *ff* 2 *f* *p* *pp*

89 *p* *mf* *f*

Detailed description: This is a page of musical notation for Violino I, covering measures 43 to 99. The score is written in a single system with ten staves. The key signature is two flats (B-flat and E-flat), and the time signature is 3/4. The music features a variety of dynamics, including fortissimo (ff), forte (f), mezzo-forte (mf), piano (p), and pianissimo (pp). There are several trills (tr) and triplet markings (3 and 2). The notation includes eighth and sixteenth notes, rests, and slurs. The page number '2' is in the top left, and the instrument name 'Violino I' is at the top center.

93 *pp* 3

100 *p*

105 *f* 2 *ten* *tr ten*

111

113 *tr*

116 *tr* 2 *p*

121 *p* *p*

126 *p* *p* *f*

130 *f* 3 *f*

136 *f* *p*

141 2 *p*

147 *ff* *tr* *tr* *tr* 11 *f*

Detailed description: This is a page of a musical score for Violino I, measures 93 to 147. The music is in a key with two flats (B-flat major or D minor) and a 3/4 time signature. The score consists of ten staves of music. Measure 93 starts with a treble clef, a key signature of two flats, and a dynamic marking of *pp*. It features a triplet of eighth notes. Measure 100 has a dynamic marking of *p* and includes a sharp sign on the second note of a triplet. Measure 105 has a dynamic marking of *f* and includes a fermata over the first note, a second ending bracket, and trills marked *tr ten*. Measure 111 is a continuous sixteenth-note passage. Measure 113 includes a trill marked *tr*. Measure 116 includes a trill marked *tr* and a second ending bracket. Measure 121 has dynamic markings of *p* and *p*. Measure 126 has dynamic markings of *p*, *p*, and *f*. Measure 130 has dynamic markings of *f* and *f*, and includes a triplet. Measure 136 has dynamic markings of *f* and *p*. Measure 141 has a dynamic marking of *p* and includes a second ending bracket. Measure 147 has a dynamic marking of *ff*, includes trills marked *tr*, a fermata over the 11th measure, and a dynamic marking of *f*.

163 *tr* *tr* *p*

167 *tr* *tr* *tr* *tr* *tr* *tr*

171 *p*

174 *tr* *ff* 4

[2.] Larghetto

con Sordini

5 *tr* *tr* *p*

10 5 *f* *tr* *p*

20 *tr* *p* 2 *f* *tr* *p*

28 7 *f* *tr* *tr* *tr*

39 *f* *tr* *p*

44 *f* *p*

49 *tr* 5 *senza Sordini* *tr* 2

[3.] Presto

10

20

29

43

60

73

82

99

109

141 *f* *ten* *ten* *ten*

152 *f* *p* *f*

166 *p* *pp* *f*

179 *f* *p* *f*

196 *p* *f*

217 *f* *f* *p* *p*

234 *p* *f* *ten* *ten* *ten*

263 *tr*

273 *p* *f*

283 *p* *f*