

Concerto per Cembalo [Wq. 27 H. 433]

Violino II

C. P. E. Bach (1714 - 1788)

[1.] Allegro

8
13
20
27
34
41
48
54
81
99
115
122

mf
p
f
f
f
p

7 14
11 8

Violino II

2

127 *mf* *p*

134 *f*

139

145 *f*

157 *f* *p*

172 *f*

181 *f* *f* *f*

192 *p* *p*

210 *f* *f*

218

223

229

236

Detailed description: This image shows a page of musical notation for Violino II, covering measures 127 to 236. The music is written in treble clef with a key signature of two sharps (F# and C#). The score includes various dynamics such as *mf* (mezzo-forte), *p* (piano), and *f* (forte). There are several fingerings indicated by numbers 2, 3, 6, 7, and 10. The notation features a variety of rhythmic patterns, including eighth and sixteenth notes, and rests. The piece concludes with a final cadence in measure 236.

241 *p* 7

254 *p* 2

263 *f p* *f p* *f p*

270 *f*

278

283 *tr*

289 *f* 7 16

317 *p* *f* 7

330 *p* 11

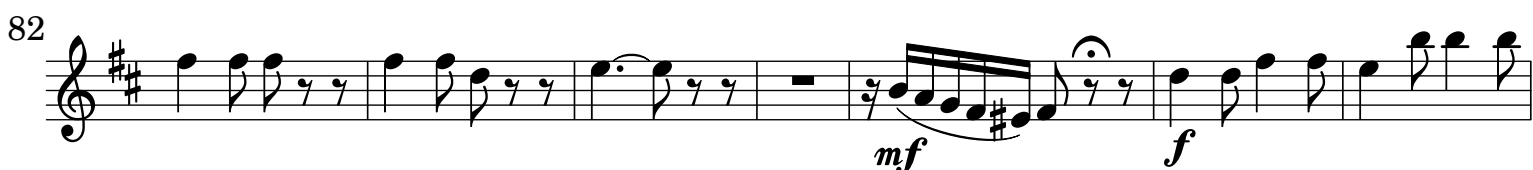
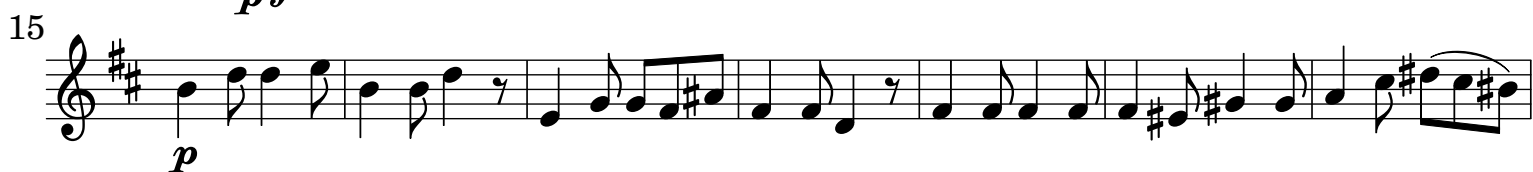
350 *f* 8

365

371

378

[2.] Siciliana



[3.] Allegro

Musical score for Violino II, page 5, measures 3-48. The score is in G major (one sharp) and 3/4 time. It features a variety of rhythmic patterns, including eighth and sixteenth notes, and rests. Dynamics include *f* (forte) and *p* (piano). The score is divided into systems of five staves each, with measure numbers 6, 10, 14, 17, 21, 25, 30, 33, 36, 40, 44, and 48 marked at the beginning of their respective staves. The key signature changes to F major (one flat) starting at measure 40. The score concludes with a final *f* dynamic marking at measure 48.

141

144

158

163

169

174

179

185

191

198

204

208

211

10

f

f

pp

f

f

p

f

f

pp

f

f

p

f

f

f

f

fp

fp

fp

f

Violino II

215 11 *f*

230 *p* *p* 2

236 *f* *p* *f* *p* *f* *p*

241 6 *f*

251 *p* *f*

254 4 5 *f* *f* *p*

267 6 *f* *p*

278 *f*

282

287 *p* (b)

291 (b)

295 *f*

299

Detailed description: This is a page of a musical score for Violino II, measures 215 to 300. The music is in D major (two sharps) and 3/4 time. The score consists of ten staves. Measure 215 starts with a treble clef and a key signature of two sharps. It features a melodic line with eighth and sixteenth notes, followed by a whole rest and a fermata. A measure rest for 11 measures follows. The piece then continues with a melodic line starting on a half note, followed by eighth notes. Dynamic markings include *f* (forte) and *p* (piano). Fingerings are indicated by numbers 1-5. There are several trills and grace notes throughout. The score ends with a double bar line and repeat dots.