

L'Apothéose de Corelli

Ier Dessus

F. Couperin (1668-1733)

[1.] Corelli au piéd de Parnasse prie les Muses de le Recevoir parmi elles.

gravement

4

7

11

15

[2.] Corelli charmé de la bonne réception qu'on lui fait au Parnasse, en marque Sa joye. Il continuë avec ceux qui L'accompagnent.

gayment

6

10

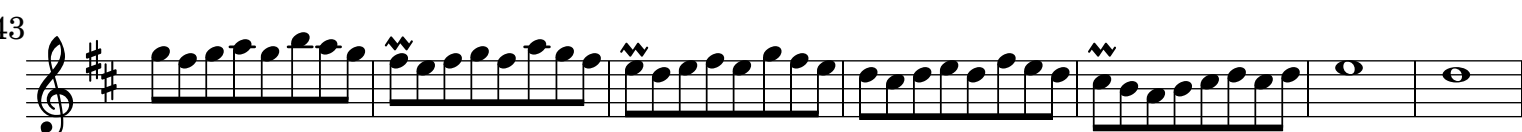
14

18

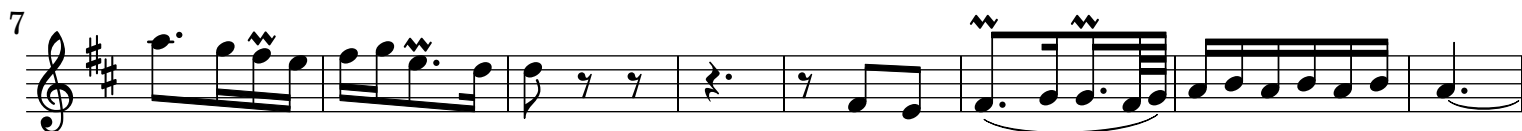
Musical score for Ier Dessus, measures 22-59. The score is written in treble clef with a key signature of two sharps (F# and C#). The music features a complex rhythmic pattern with many sixteenth and thirty-second notes, often beamed together. Trills and grace notes are used throughout. The piece concludes with a double bar line at measure 59.

Measures shown: 22, 26, 30, 34, 38, 41, 44, 47, 51, 55, 59.

[3.] Corelli buvant à la Source D'hypocrène Sa Troupe Continue.

Notes égales; et Coulées, et modérément.

[4.] Entouziiasme de Corelli Causé par les eaux D'hypocrène



29

35

41

46

52

[5.] Corelli après son Entouziasme S'endort; et sa Troupe jouë le Sommeil suivant.

Notes égales et Coulées

tres doux

5

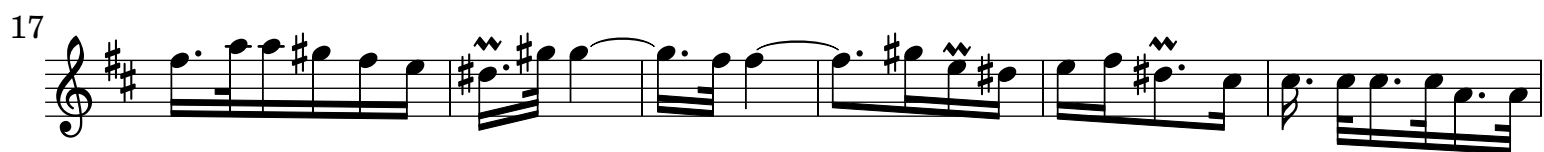
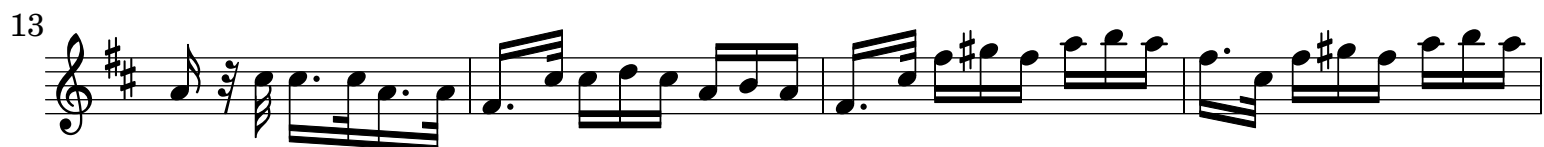
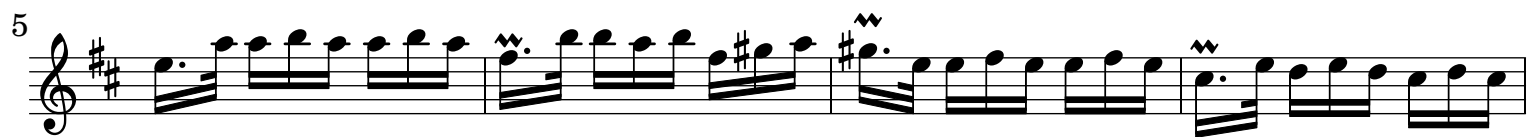
10

14

18

22

[6.] Les Muses reveillent Corelli, et le placent auprès D'Apollon



[7.] Remerciment de Corelli



Ier Dessus

This image shows a musical score for the first part of a piece, labeled 'Ier Dessus'. The score is written on a single staff in treble clef with a key signature of one sharp (F#) and a common time signature (C). The music consists of 46 measures, starting at measure 6 and ending at measure 51. The notation includes various rhythmic values such as eighth and sixteenth notes, often beamed together in groups. There are several instances of grace notes (marked with a 'w' symbol) and slurs. The piece concludes with a final whole note chord.