

Concerto VIII - Op. 6

Violino I

A. Corelli (1653-1713)

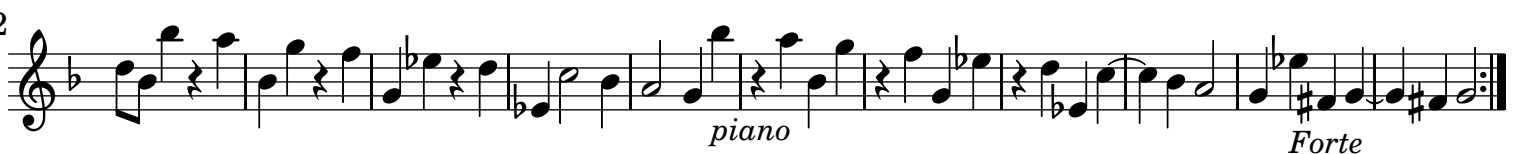
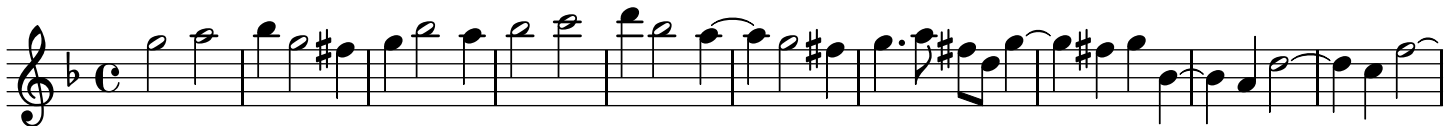
[1.] Vivace



[2.] Grave. Arcate, Sostenute e come stà



[3.] Allegro



[4.] Adagio



[5.] Allegro

Musical score for Violino I, measures 9-18, marked [5.] Allegro. The music is in G minor (one flat) and common time (C). It consists of six staves of music. The first five staves (measures 9-15) feature a continuous eighth-note pattern. The sixth staff (measures 16-18) concludes with a half note and a fermata.

[6.] Adagio

Musical score for Violino I, measures 22-29, marked [6.] Adagio. The music is in G minor (one flat) and common time (C). It consists of four staves of music. The first staff (measures 22-24) features a slower, more melodic line with some slurs. The second staff (measures 25-28) continues the melodic line. The third staff (measures 29-30) concludes with a half note and a fermata, marked *piano*.

[7.] Vivace

Musical score for Violino I, measures 9-19, marked [7.] Vivace. The music is in G minor (one flat) and 3/4 time. It consists of three staves of music. The first staff (measures 9-18) features a lively eighth-note pattern with trills (tr) and slurs. The second staff (measures 19-28) continues the pattern. The third staff (measures 29-30) concludes with a half note and a fermata, marked *Piano*.

[8.] Allegro

6

11

15

19

piano

30

36

40

44

49

55

62

piano *Forte* *Piano* [attacca]

[9.] Pastorale ad Libitum. Largo

