

Concerto VIII - Op. 6

Viola

A. Corelli (1653-1713)

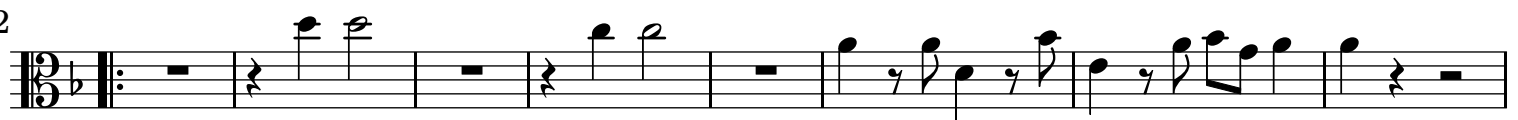
[1.] Vivace



[2.] Grave. Arcate, Sostenute e come stà



[3.] Allegro



[4.] Adagio



[5.] Allegro



13



17



[6.] Adagio

22



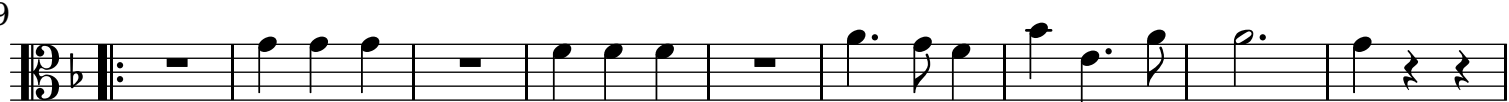
27



[7.] Vivace



9



18



[8.] Allegro



13



37

37

piano *Forte* *piano* *Forte* *piano* *Forte*

49

49

60

60

piano *Forte* *Piano* *[attacca]*

[9.] Pastorale ad Libitum. Largo

4 2

11

11

15

2

21

21

piano

26

26

Forte *Piano* *Forte*

31

31

36

5 2

48

48

piano *Pianissimo* *Forte*

53

53

piano *Pianissimo*