

Sinfonia in Do Maggiore W-K13

L. Colista (1629-1680)

Violoncello

9

17

22

28

31

38

42

48

53

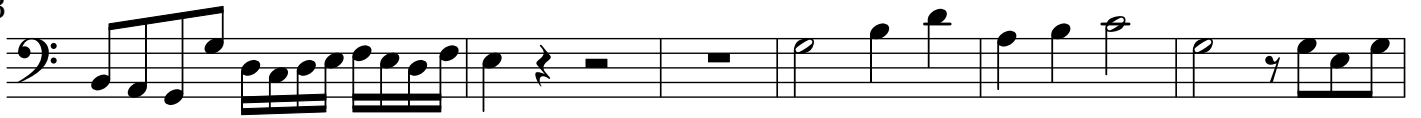
Detailed description: This image shows a page of a musical score for the Cello part of the first movement of the G major Symphony (W-K13) by Leopoldo Colista. The score is written in bass clef with a common time signature (C). It consists of 11 staves of music. The first staff begins with a whole rest followed by a half note G2, then a quarter rest, and continues with a melodic line. The second staff starts at measure 9 and ends with a repeat sign and a common time signature. The third staff starts at measure 17 and features a rhythmic pattern of eighth notes with accents. The fourth staff starts at measure 22 and continues the eighth-note pattern. The fifth staff starts at measure 28 and includes a key signature change to one sharp (F#) and a dynamic marking of (h). The sixth staff starts at measure 31 and continues the eighth-note pattern. The seventh staff starts at measure 38 and ends with a repeat sign and a common time signature. The eighth staff starts at measure 42 and includes a fingering '2' above the first note. The ninth staff starts at measure 48 and continues the eighth-note pattern. The tenth staff starts at measure 53 and continues the eighth-note pattern.

Violoncello

58



63



69



73



78



85



92



98



109



116



123



131



Sinfonia in La Maggiore W-K22

L. Colista (1629-1680)

Violoncello

6

12

16

21

31

41

48

57

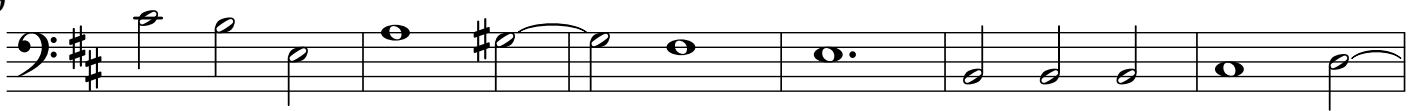
62

67

73

Violoncello

79



85



91



96



101



106



110



114



119



126



134



142



Sinfonia in Do Maggiore W-K10

L. Colista (1629-1680)

Violoncello

The image displays a musical score for the Cello part of the first movement of the Sinfonia in C major, W-K10 by Leopoldo Colista. The score is written in bass clef with a common time signature (C). It consists of ten staves of music, each beginning with a measure number on the left. The notation includes various rhythmic values such as eighth, sixteenth, and thirty-second notes, as well as rests and dynamic markings. A key signature change to one flat (B-flat) is indicated by a flat symbol above a note in measure 15. A time signature change to 3/2 is shown in measure 23. The score concludes with a double bar line and a C-clef in measure 40.

Violoncello

