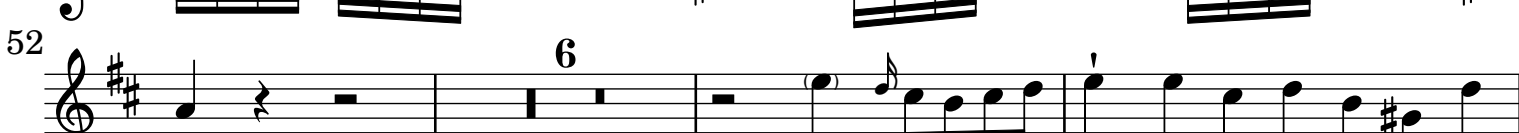
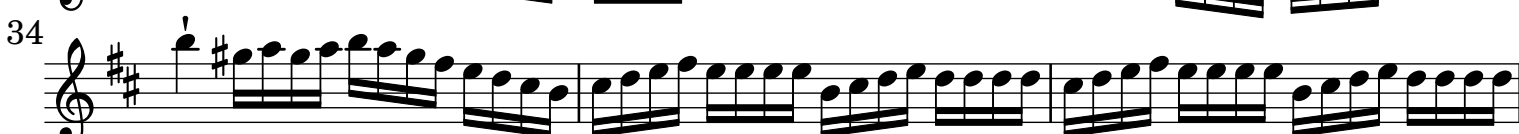
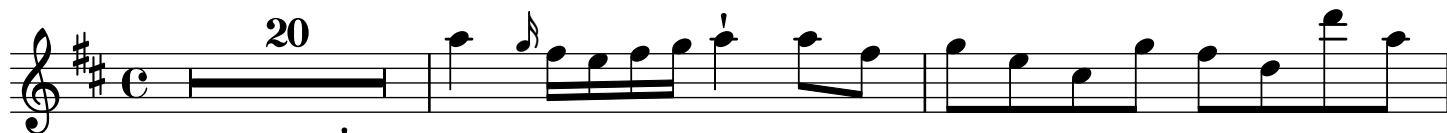


# Concerto per Flauto traverso

## Flauto traverso

N. Calandro (1715-ca.1760)

[1.] All[egr]o



This image shows a page of musical notation for a flute part, numbered 2. The score is written in treble clef with a key signature of two sharps (F# and C#). It consists of ten staves of music, each beginning with a measure number: 61, 64, 67, 70, 73, 76, 79, 82, 85, and 98. The notation includes various rhythmic values such as eighth and sixteenth notes, as well as rests. There are several dynamic markings, including accents and hairpins. A large slur covers measures 92 through 95. The piece concludes with a final measure (98) that ends with a double bar line and a fermata over a whole note, followed by a 4-measure rest.

## [2.] And[antin]o con un po' di moto

19

24

28

31

34

37

40

45

49

55

59

62

65

*f*

6

2

6

68

71

74

79

83

Detailed description: This block contains five staves of musical notation for measures 68 through 83. The music is in treble clef with a key signature of one sharp (F#). It features a variety of rhythmic patterns, including eighth and sixteenth notes, and rests. There are several dynamic markings such as accents and hairpins. The notation includes slurs, ties, and a fermata over a note in measure 82. The piece concludes with a double bar line and a 4-measure rest.

[3.] All[egr]o

28

34

39

44

49

54

59

64

Detailed description: This block contains seven staves of musical notation for measures 28 through 64. The music is in treble clef with a key signature of two sharps (F# and C#). It begins with a 6/8 time signature. The tempo is marked 'All[egr]o'. The notation is characterized by rapid sixteenth-note passages and eighth-note runs. There are several dynamic markings, including accents and hairpins. The piece ends with a double bar line and a 4-measure rest.

69

81

86

91

96

101

106

112

117

122

128

134

139

Detailed description: This image shows a page of musical notation for a flute part. The score is written on ten staves, each beginning with a measure number. The key signature is two sharps (F# and C#), and the time signature is 4/4. The music consists of a single melodic line with various rhythmic patterns, including eighth and sixteenth notes, and rests. There are several slurs and accents throughout the piece. A '7' is written above the first measure of the first staff. The notation is clear and professional, typical of a printed musical score.