

## La Griselda - Sinfonie e Arie con strumenti

A. Scarlatti (1660 -1725)

## Violino II

## [1.] Sinfonia avanti l'Opera - Presto

4

7

11

14

17

19

## Adagio

22

30

Presto

37

43

47



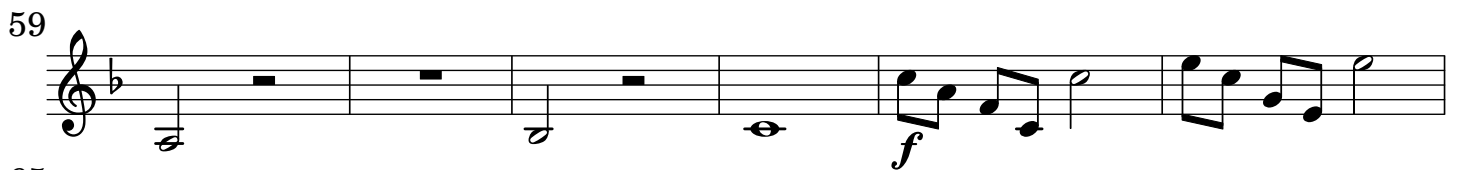
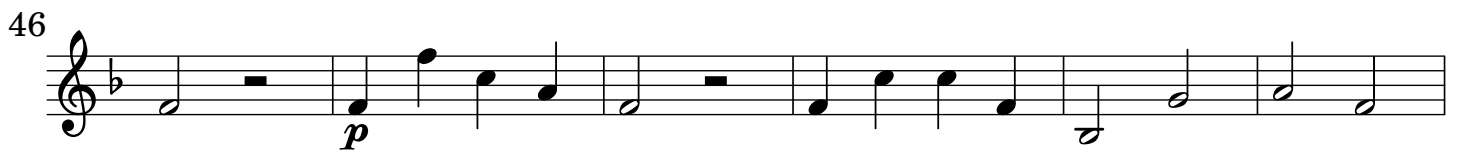
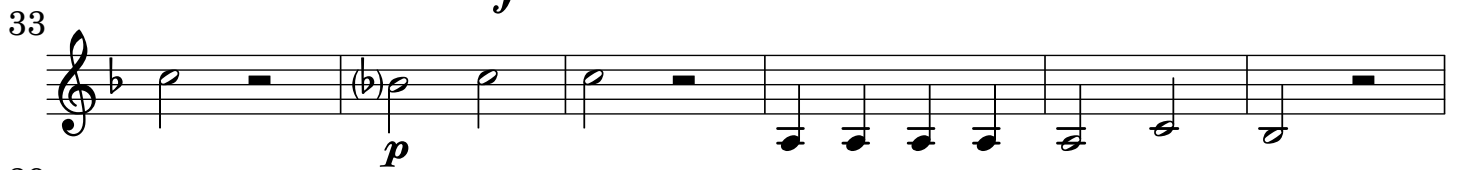
## Violino II

## [3.] Aria - "Come presto nel porto crudele" - All[egr]o moderato

§



All[egr]o



## Violino II

77

83

88

94

*p*

*p*

*p*

Dal %

## [4.] Aria - "Mi rivedi o selva ombrosa" - Moderato

4

7

10

13

16

23

*p*

*f*

*f*

*p*

Dal %



## Violino II

## [6.] Aria - "Credi amor" - And[an]te Vivace

Musical score for Violino II, Aria "Credi amor" by A. Scarlatti. The score is in C major, 3/4 time, and consists of 42 measures. The tempo is And[an]te Vivace. The score includes various dynamics (p, f) and articulations (accents, slurs).

Measures 1-4: Introduction with a repeat sign. Measure 4 starts with a dynamic of *p*.  
 Measures 7-11: Continuation of the melody with a dynamic of *p*.  
 Measures 14-19: Continuation of the melody with a dynamic of *p*.  
 Measures 23-27: Continuation of the melody with a dynamic of *f*.  
 Measures 30-37: Continuation of the melody with a dynamic of *p*.  
 Measures 42: Continuation of the melody with a dynamic of *f*. The score ends with a repeat sign and the instruction "Dal %".

## Violino II

## [7.] Aria - "Finirà, barbara sorte" - And[an]te moderato

4

7

10

13

16

23

26

Dal §

## [8.] Caccia Reale - All[egr]o

11

19



## Violino II

## [10.] Aria "Ti voglio sempre odiar" - All[egr]o

Musical score for Violino II, Aria "Ti voglio sempre odiar" by A. Scarlatti. The score is in G minor, 3/4 time, and consists of 41 measures. It features various musical notations including triplets, dynamics (*p*, *f*), and articulation marks.

The score is divided into systems of staves. The first system (measures 1-4) includes a triplet of eighth notes. The second system (measures 5-8) starts with a repeat sign and a *p* dynamic. The third system (measures 9-12) continues with a *p* dynamic. The fourth system (measures 13-16) features a *p* dynamic. The fifth system (measures 17-19) continues with a *p* dynamic. The sixth system (measures 20-23) features a *f* dynamic. The seventh system (measures 24-27) features a *f* dynamic. The eighth system (measures 28-33) continues with a *f* dynamic. The ninth system (measures 34-37) features a *p* dynamic. The tenth system (measures 38-41) features a *f* dynamic and ends with a *Dal* marking.

## Violino II

## [11.] Aria - "Ho in seno due fiammelle" - And[an]te moderato

4

7

10

13

16

19

22

26

29

Dal %

## Violino II

## [12.] Aria "Come va l'ape di fiore in fiore" - All[egr]o

12

14

25

34

41

49

57

66

73

81

90

100

*p*

*f*

*p*

*f*

Dal %