

Concerto Sacro VI Op. II

A. Scarlatti (1660 - 1725)

Violino I

[2.] Hæc est Aurora. A tempo giusto

10

34

47

59

73

88

110

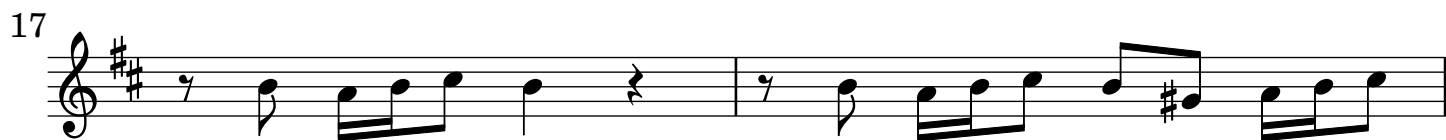
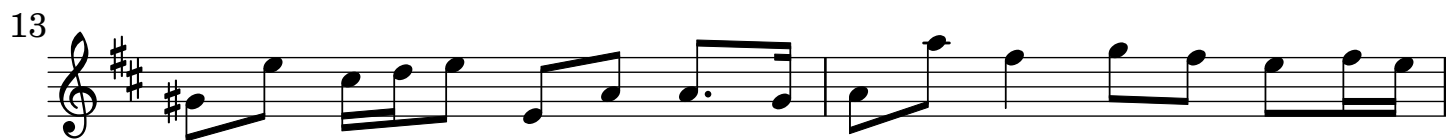
[4.] Hanc Aurora conflagrans. Allegro

4

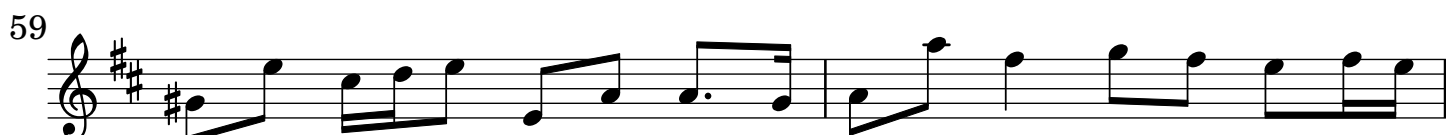
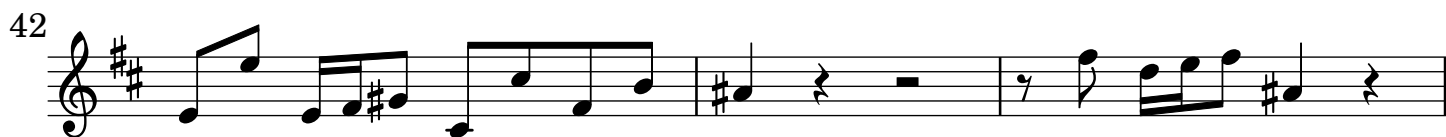
7

10

Violino I



Violino I



Violino I

[5.] Ritornello

Musical score for Ritornello, measures 3-6. The key signature is one sharp (F#) and the time signature is common time (C). The score consists of three staves. The first staff begins with a treble clef, a key signature of one sharp, and a common time signature. It contains measures 3 and 4. The second staff contains measures 5 and 6. The third staff contains measures 7 and 8. The music features a mix of eighth and sixteenth notes, with some rests and a final measure ending with a double bar line.

[7.] O nimis clara lux. Pastorale Allegro

Musical score for O nimis clara lux. Pastorale Allegro, measures 5-42. The key signature is one sharp (F#) and the time signature is common time (C). The score consists of ten staves. The first staff begins with a treble clef, a key signature of one sharp, and a common time signature. It contains measures 5 and 6. The second staff contains measures 7 and 8. The third staff contains measures 9 and 10. The fourth staff contains measures 11 and 12. The fifth staff contains measures 13 and 14. The sixth staff contains measures 15 and 16. The seventh staff contains measures 17 and 18. The eighth staff contains measures 19 and 20. The ninth staff contains measures 21 and 22. The tenth staff contains measures 23 and 24. The music features a mix of eighth and sixteenth notes, with some rests and a final measure ending with a double bar line.

[9.] Ave lactea sine macula

Musical score for Violino I, measures 9-142. The score is written in treble clef with a key signature of one sharp (F#) and a 3/8 time signature. The music consists of ten staves of notation. Measure numbers are indicated at the beginning of each staff: 9, 18, 29, 39, 48, 56, 83, 93, 104, 121, 132, and 142. The notation includes various rhythmic values such as eighth notes, quarter notes, and dotted notes, along with rests and accidentals. There are several repeat signs (double bar lines with dots) and first/second endings (marked with 1 and 2) throughout the piece. The final measure (142) ends with a double bar line.