

50



55



60



65



71



77



Dessus I score, measures 50-82. The music is in G minor (one flat) and 2/4 time. It features a melodic line with various rhythmic patterns, including eighth and sixteenth notes, and rests. The key signature changes to G major (two sharps) at measure 77.

2. Marche Triomphante [Acte Premier, Sc. I]



6



11



17

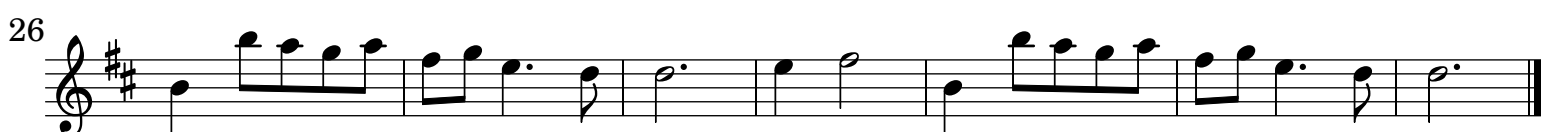
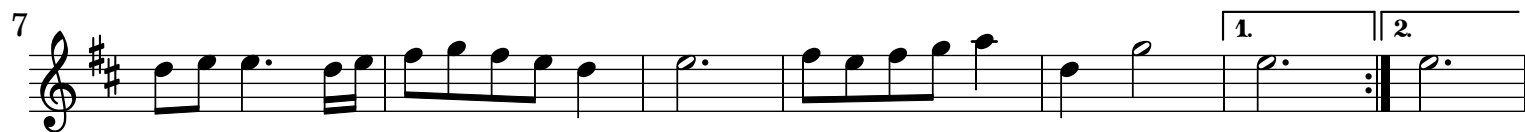


23



Marche Triomphante score, measures 1-28. The music is in G major (two sharps) and 2/4 time. It features a rhythmic melody primarily composed of eighth and sixteenth notes. The key signature remains G major throughout.

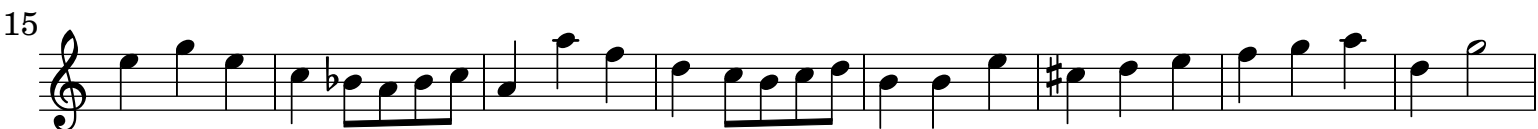
3. Menuet [Acte Premier, Sc. IV]



4. Prelude [Acte II]



5. [Chaconne incomplète] [Acte II, Sc. III]



La fin de la chaconne à la fin de l'acte 2 n'a pas été copiée

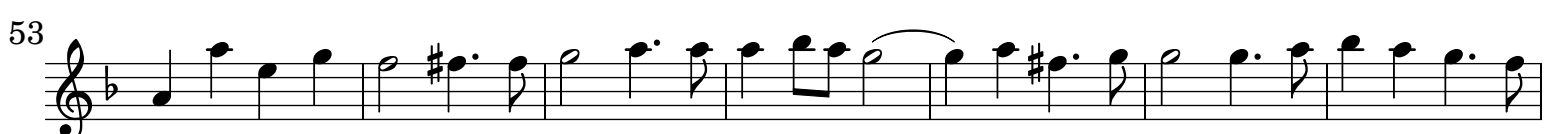
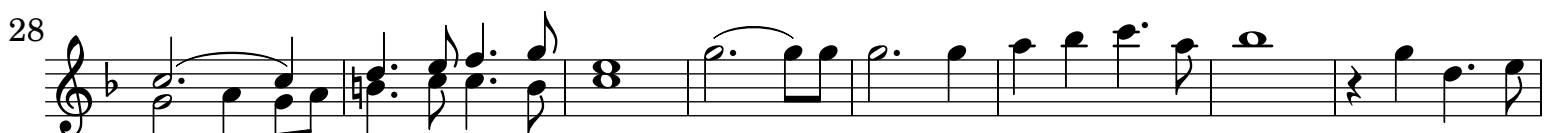
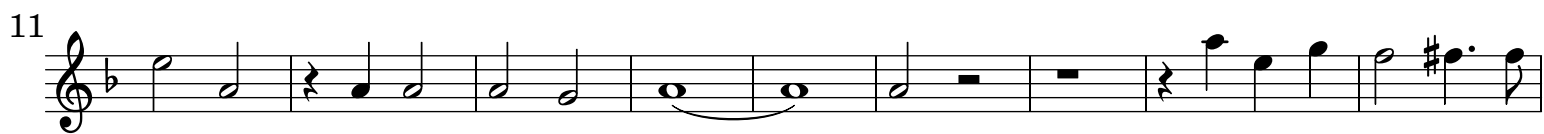
6. Prelude [Acte III]



7. Gigue [Acte III, Sc. III]



8. Prelude - Tous [Acte IV]



9. Rigaudon [Acte IV, Sc. III]



10. Bourè [Acte IV, Sc. III]

Musical score for Bourè [Acte IV, Sc. III]. The piece is in G major (one sharp) and 2/4 time. It consists of five staves of music. The first staff begins with a treble clef, a key signature of one sharp (F#), and a 2/4 time signature. The music features a series of eighth and sixteenth notes, with a repeat sign after the first measure. The second staff starts at measure 5 and includes a first ending bracket labeled '1'. The third staff starts at measure 9 and includes a second ending bracket labeled '2'. The fourth staff starts at measure 13. The fifth staff starts at measure 17 and includes first and second ending brackets labeled '1' and '2' respectively. The piece concludes with a double bar line.

11. Bruit d'Armes [Acte V]

Musical score for Bruit d'Armes [Acte V]. The piece is in G major (one sharp) and 3/8 time. It consists of five staves of music. The first staff begins with a treble clef, a key signature of one sharp (F#), and a 3/8 time signature. The music is characterized by a rhythmic pattern of eighth and sixteenth notes, with a repeat sign after the first measure. The second staff starts at measure 7. The third staff starts at measure 12 and ends with a double bar line. The fourth staff starts at measure 16 and includes a key signature change to F major (no sharps or flats) at measure 20. The fifth staff starts at measure 26 and ends with a double bar line.

12. Marche Triomphante [Acte V, Sc VI]

Musical score for Marche Triomphante [Acte V, Sc VI]. The piece is in G major (one sharp) and 2/4 time. It consists of three staves of music. The first staff begins with a treble clef, a key signature of one sharp (F#), and a 2/4 time signature. The music features a series of eighth and sixteenth notes, with a repeat sign after the first measure. The second staff starts at measure 6. The third staff starts at measure 11 and ends with a double bar line.